

# Old School Square Master Plan

## April 24, 2017







# OLD SCHOOL SQUARE



# Online Survey – 1/18/2017 through 1/29/2017

1. Do you live in Delray Beach?
2. Do you work in Delray Beach?
3. How old are you?
4. What is your gender?
5. If you live or work in Delray Beach, what is your zip code?
6. Do you have children or grandchildren that visit or want to visit Old School Square?
7. What is your mode of transportation when visiting OSS?
8. Do you find it difficult to find parking when attending an event at OSS?
9. Are there sufficient means of public transportation to OSS?
10. Are handicap accessible routes and drop offs a current problem for you?
11. What is the number of times you have attended events at OSS in the past year?
12. How many times have you come to OSS not for a specific event in the past year?
13. When do you visit the park most often?
14. Rank the seasons when you spend the most time at OSS? (Rank from most time to least time)
15. Which group do you observe as being the primary users of the park?
16. Which group is least served by the park?
17. What is the primary activity are you doing when you visit OSS?
18. Are you an event planner or have you ever planned an event at OSS?
19. Which of the following do you believe is the strongest attribute of OSS?
20. Do you feel that OSS, through its current operations, supports your vision for the City and OSS?
21. Do you feel the park is underutilized or over utilized?
22. Do you feel safe when visiting the park at night?
23. Should the park have more or less shade trees?
24. Should the park have more pavement/hard surfaces?
25. Does OSS contribute to the vibrant small town character of Delray Beach?
26. Does OSS celebrate/announce one's arrival at the town's center?
27. While walking around OSS, which of the following was most difficult to find or you are surprised to learn exists?
28. Please arrange the below list of categories in order of priority (highest at the top to least at the bottom) that you believe will maximize the usability of OSS park and its benefit for the City of Delray Beach, residents and visitors.
29. Be Creative...Please write in any additional features/ideas that are important to you at Old School Square?



**OLD SCHOOL SQUARE**







DECEMBER 15, 2016 Core Committee



JANUARY 18, 2017 Public Meeting



FEBRUARY 6, 2017 Core Committee



MARCH 6, 2017 Core Committee



MARCH 13, 2017 Public Meeting



MARCH 29, 2017 Core Committee



# OLD SCHOOL SQUARE









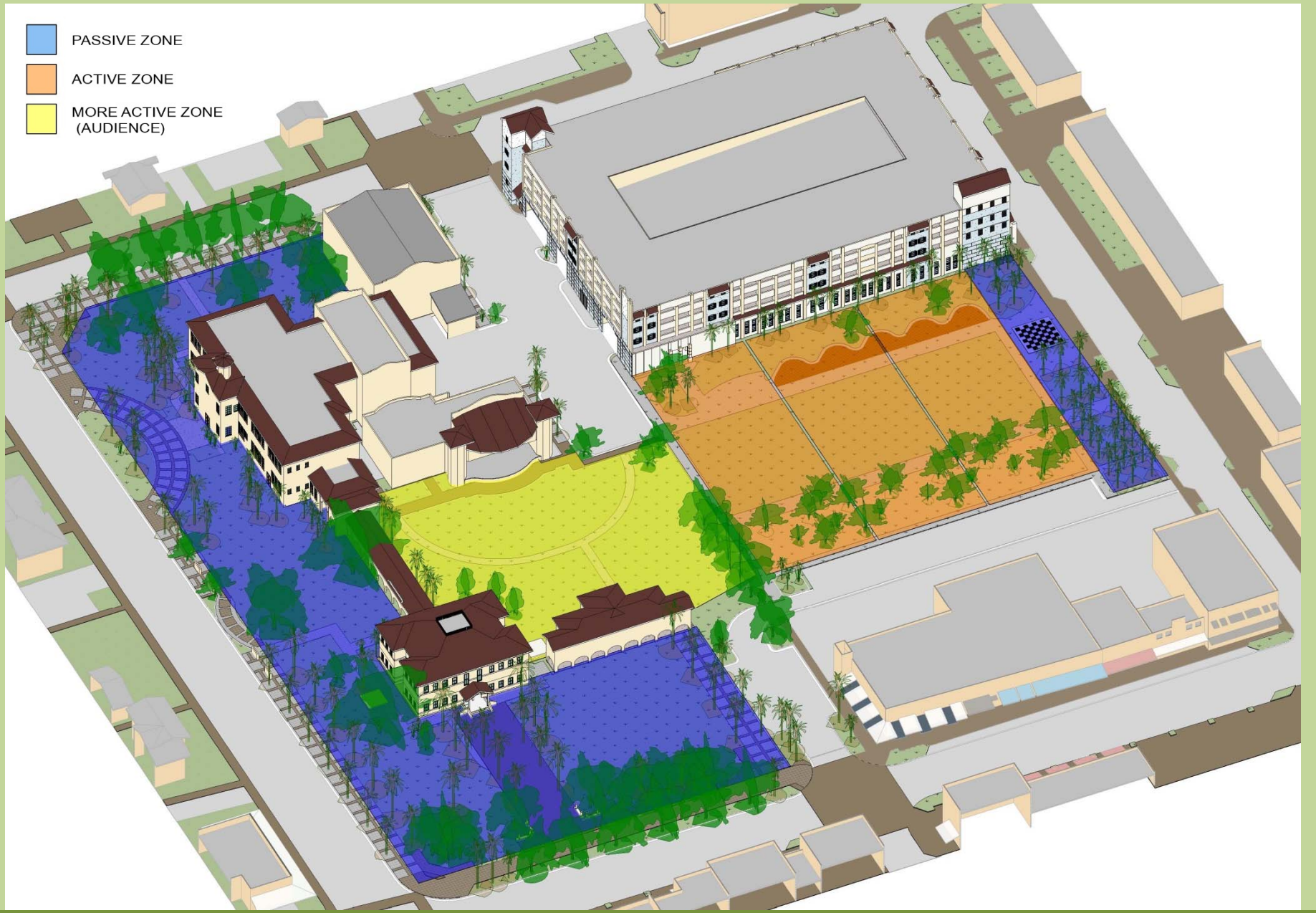


# OLD SCHOOL SQUARE





- PASSIVE ZONE
- ACTIVE ZONE
- MORE ACTIVE ZONE (AUDIENCE)

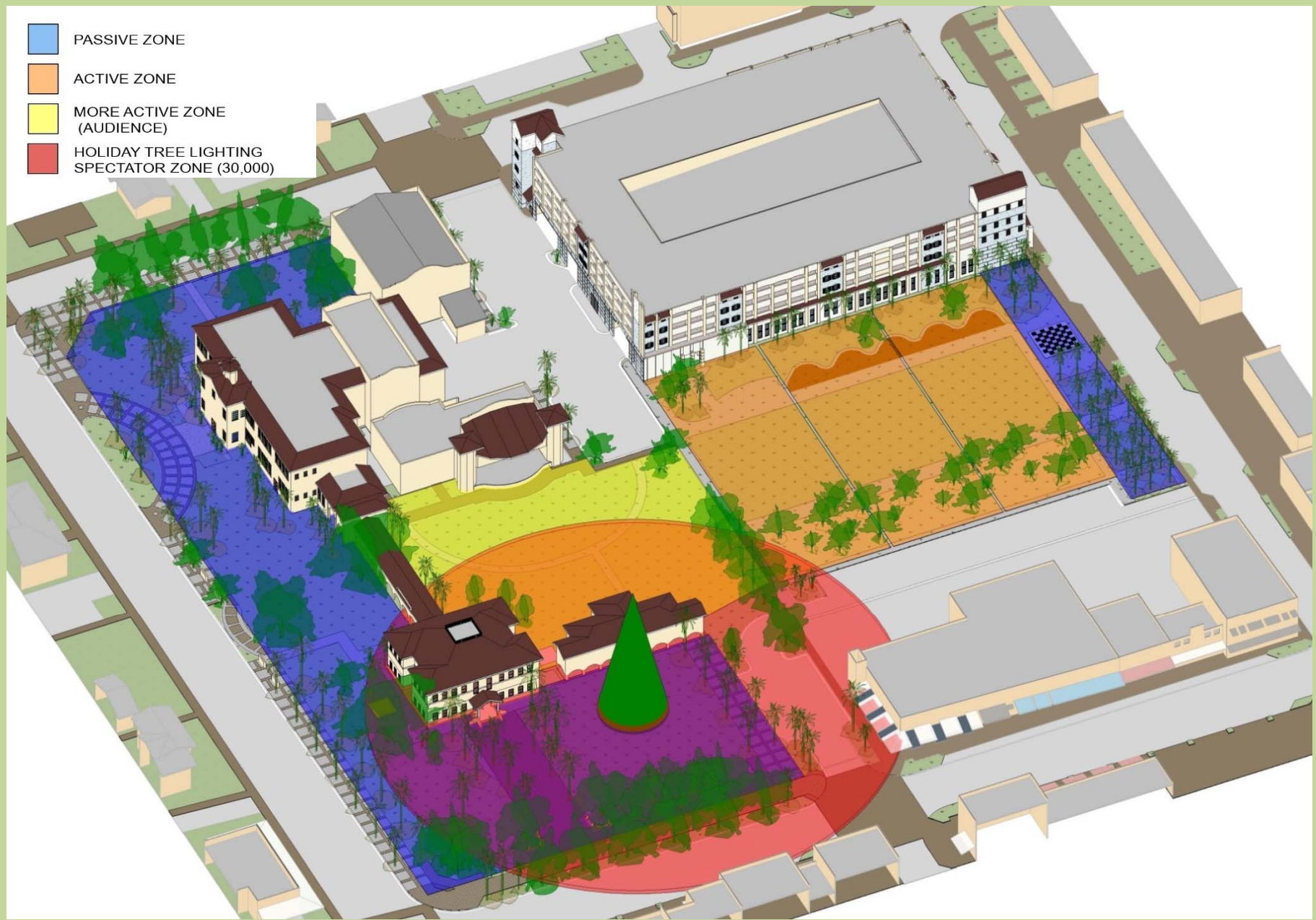


# OLD SCHOOL SQUARE





- PASSIVE ZONE
- ACTIVE ZONE
- MORE ACTIVE ZONE (AUDIENCE)
- HOLIDAY TREE LIGHTING SPECTATOR ZONE (30,000)



# OLD SCHOOL SQUARE







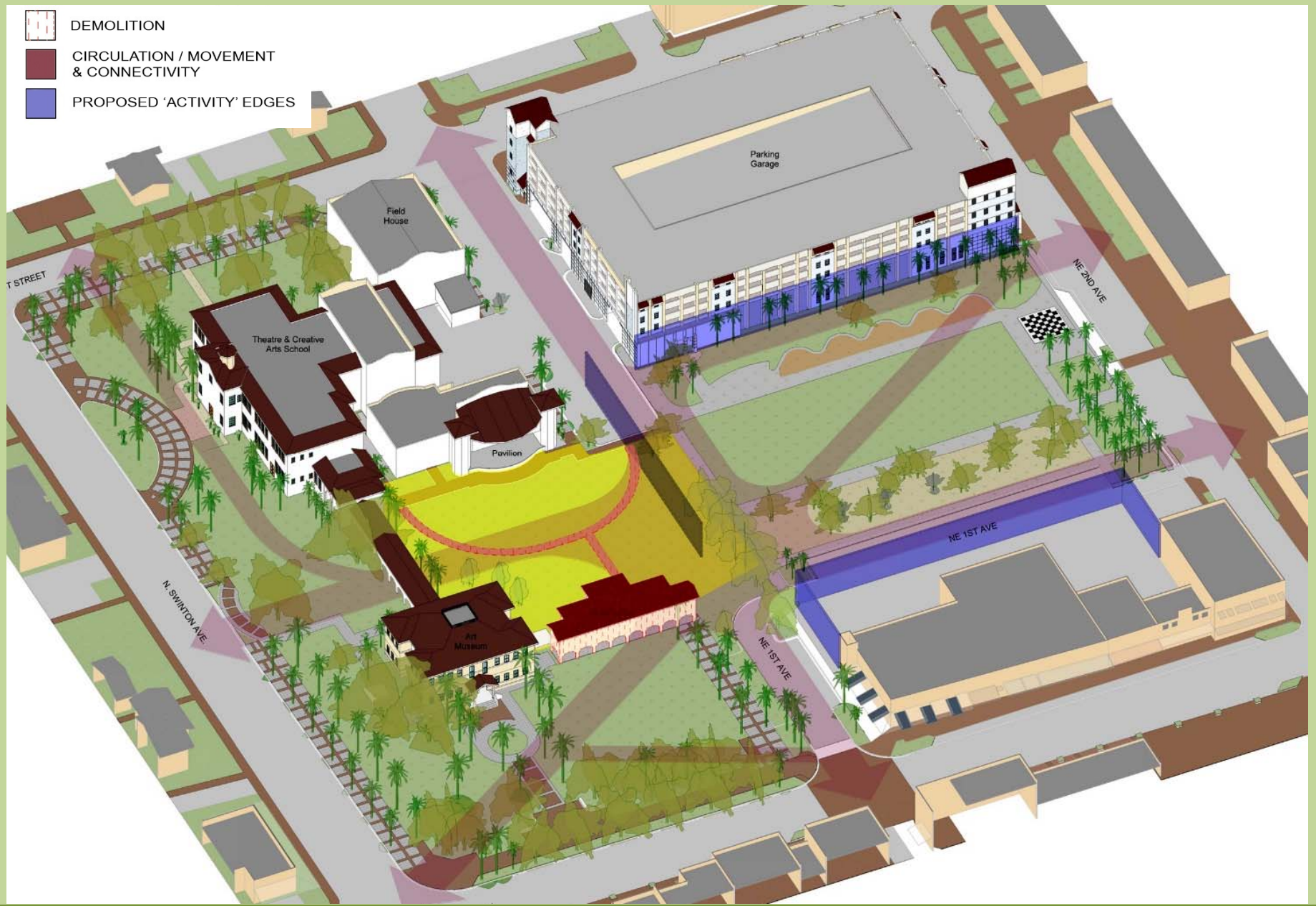
DEMOLITION



CIRCULATION / MOVEMENT & CONNECTIVITY



PROPOSED 'ACTIVITY' EDGES



# OLD SCHOOL SQUARE



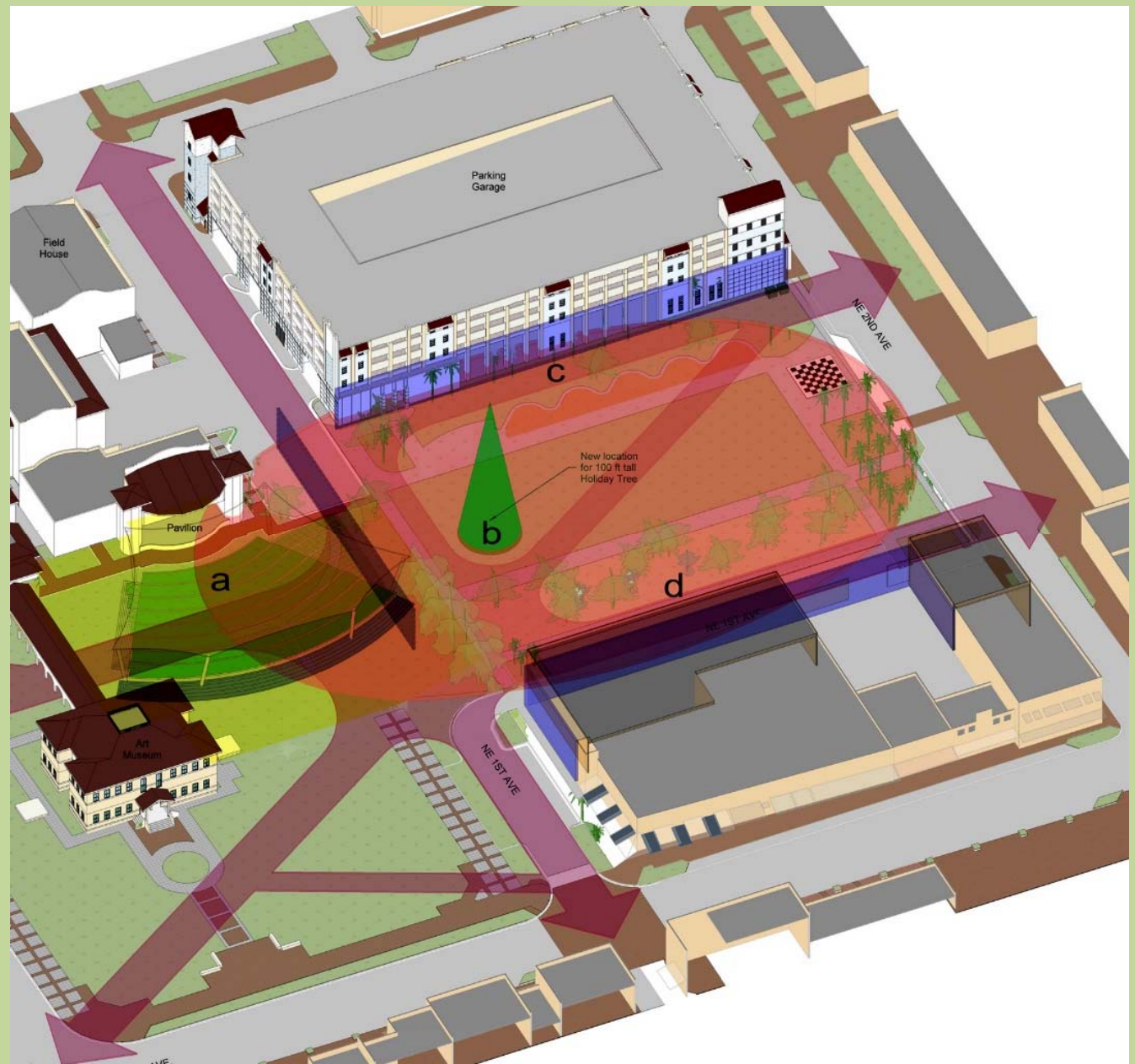


a New Amphitheater tiered lawn seating with covered shade canopy

b New location of 100-foot tall town Christmas Tree

c Activated edge along existing parking garage to be retrofitted with fold-up glass doors to 'booth' units housing 'green' market vendors

d Activated edge of new buildings creating a walkway promenade.  
- 'activity' edge of shops, restaurants & café's

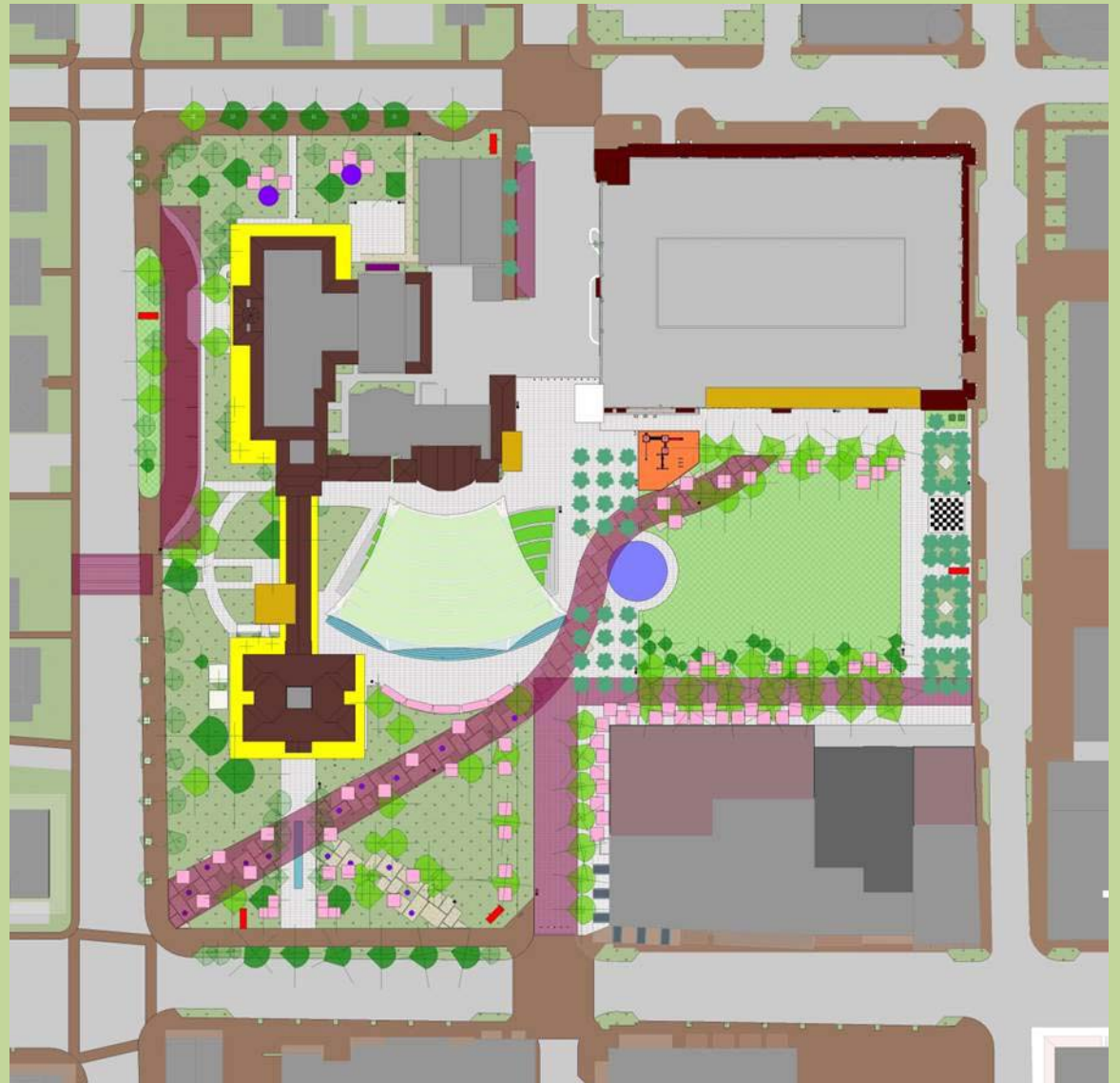
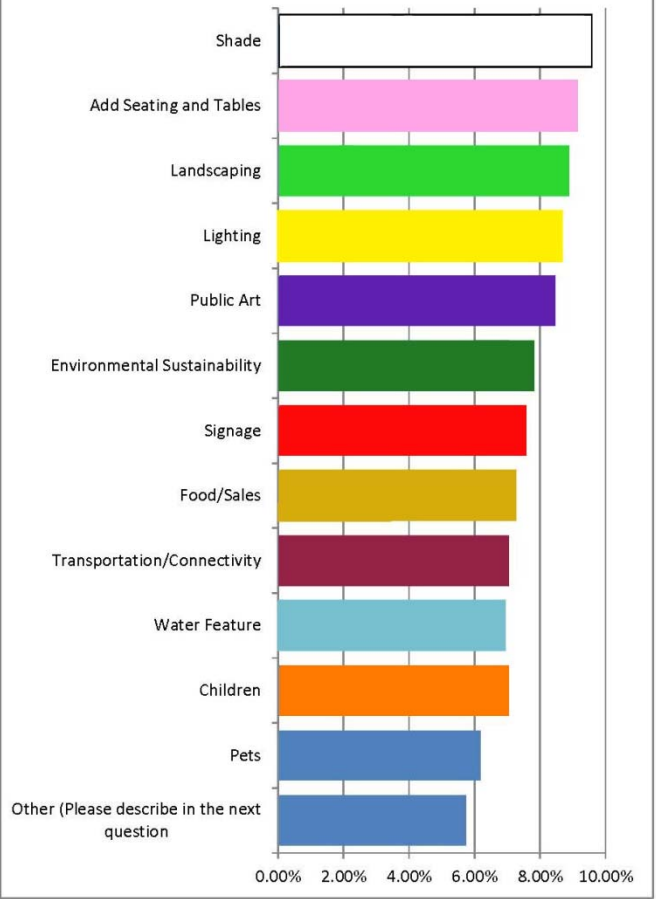


**OLD SCHOOL  
SQUARE**





**Priority that you believe will maximize the usability of OSS park and its benefit for the City of Delray Beach, residents and visitors.**



**OLD SCHOOL SQUARE**







# OLD SCHOOL SQUARE







# OLD SCHOOL SQUARE















# OLD SCHOOL SQUARE







# OLD SCHOOL SQUARE















# OLD SCHOOL SQUARE







# OLD SCHOOL SQUARE







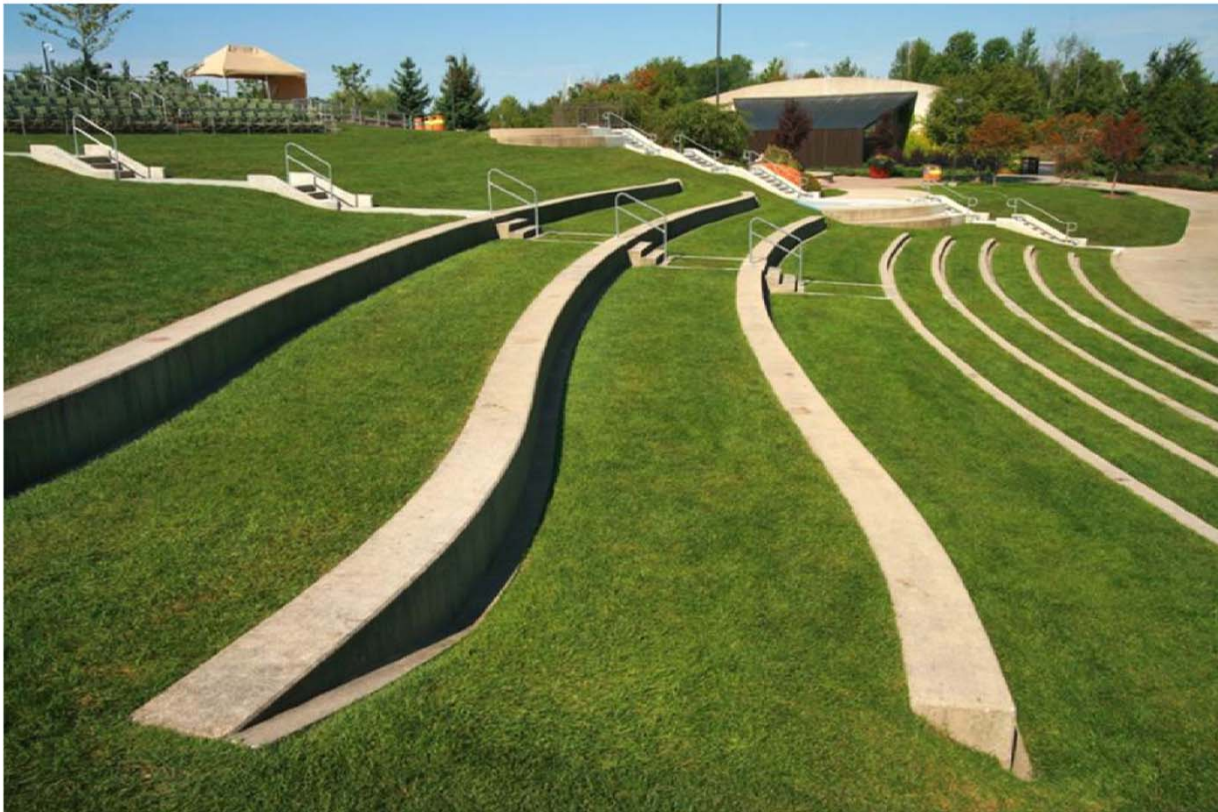
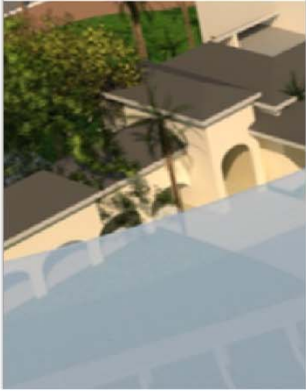








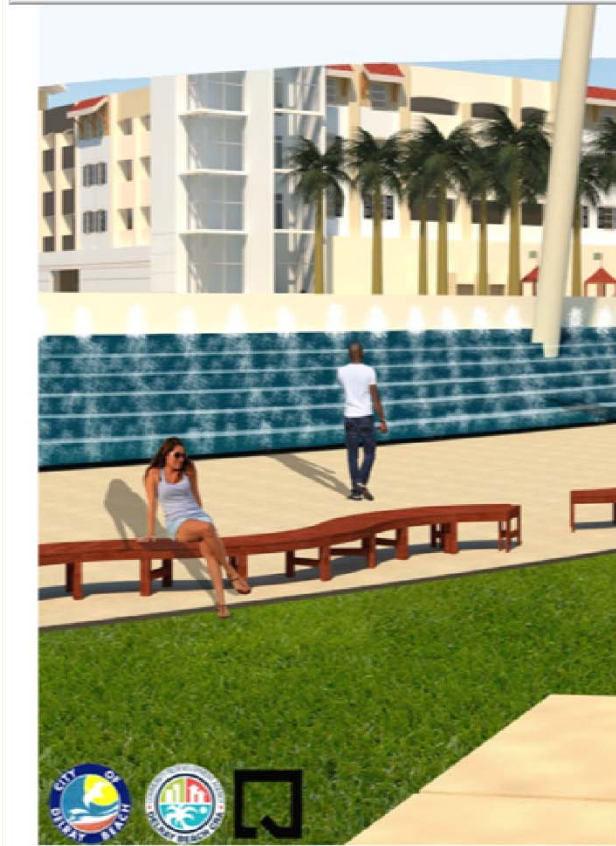








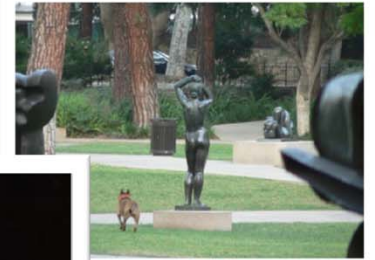


















## Lighting Summary

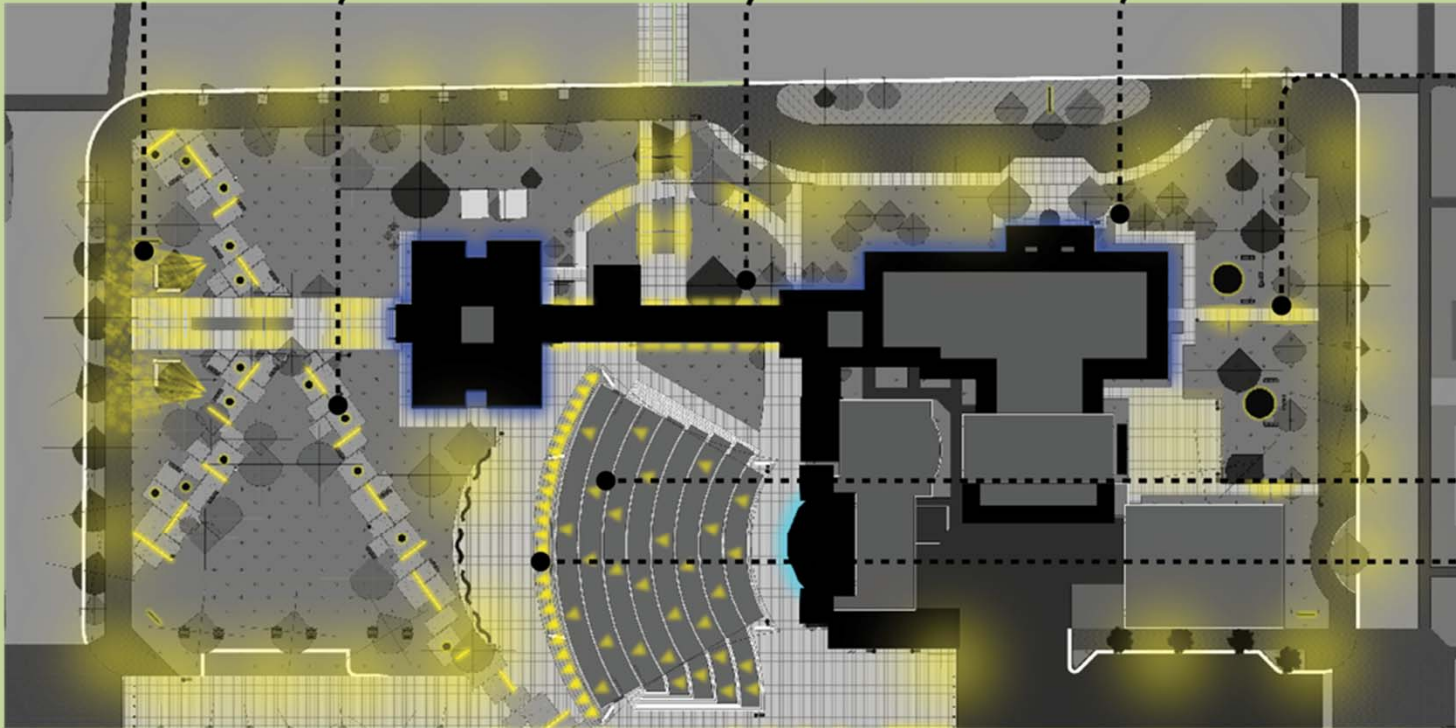
- Use lighting to activate the space to be a nighttime economic driver.
- Provide visual cues to assist with wayfinding and safety.
- Create hierarchy and visual interest with layers of light.
- Neutral and warm correlated color temperatures.
- Celebrate historical architecture with white and color changing light.
- Design within the City of Delray Beach illuminance criteria.
- Design an “energy effective” lighting solution.
- Provide optical control to reduce light trespass and light pollution.
- Use applicable luminaires for harsh environment.
- Adhere to budget and schedule.



**OLD SCHOOL  
SQUARE**



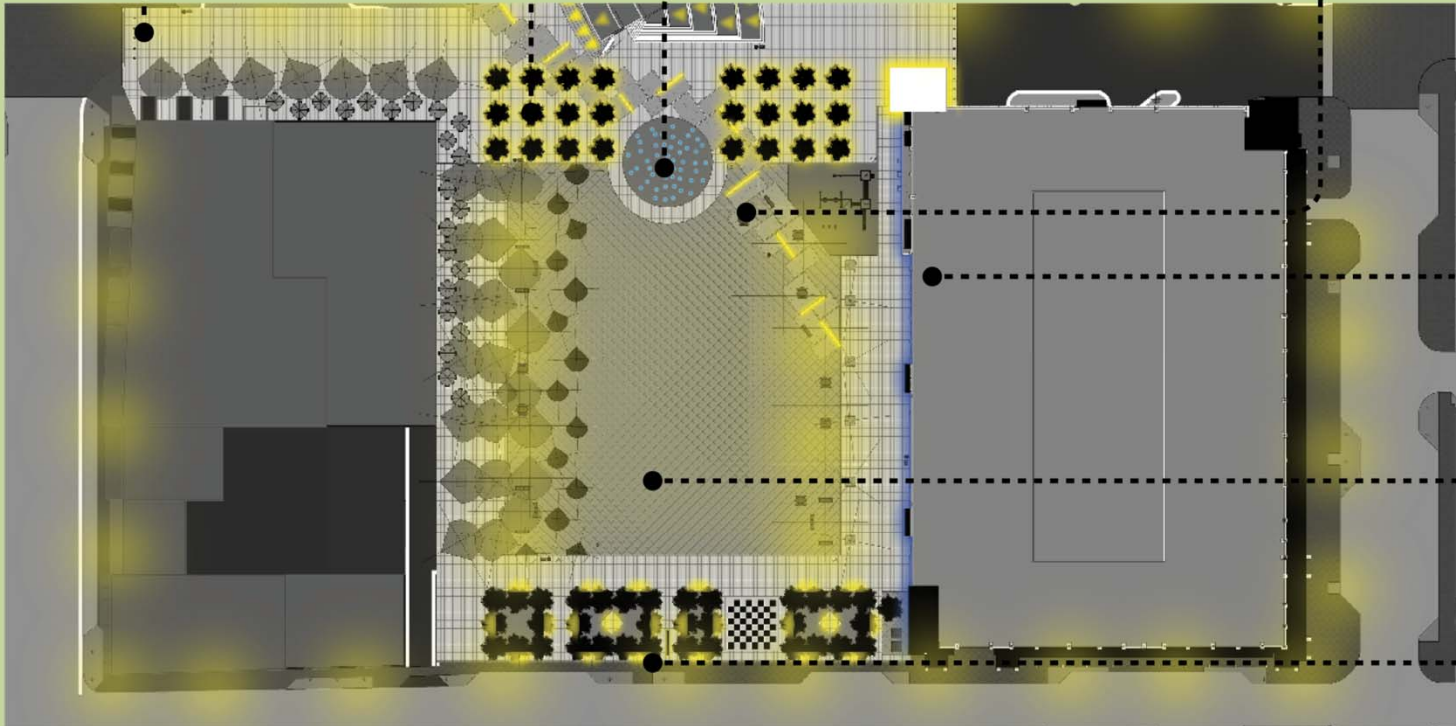




# OLD SCHOOL SQUARE



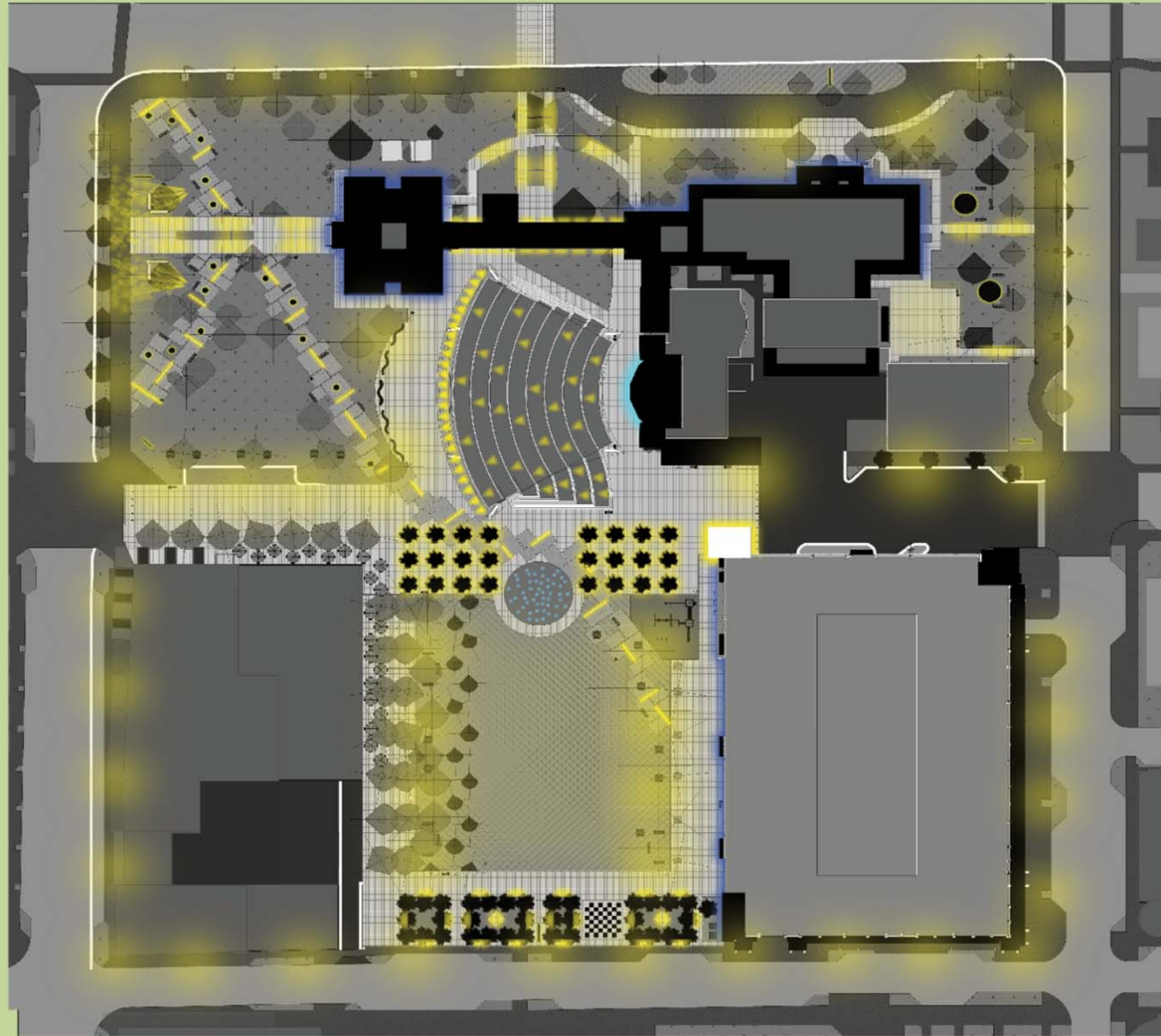




# OLD SCHOOL SQUARE



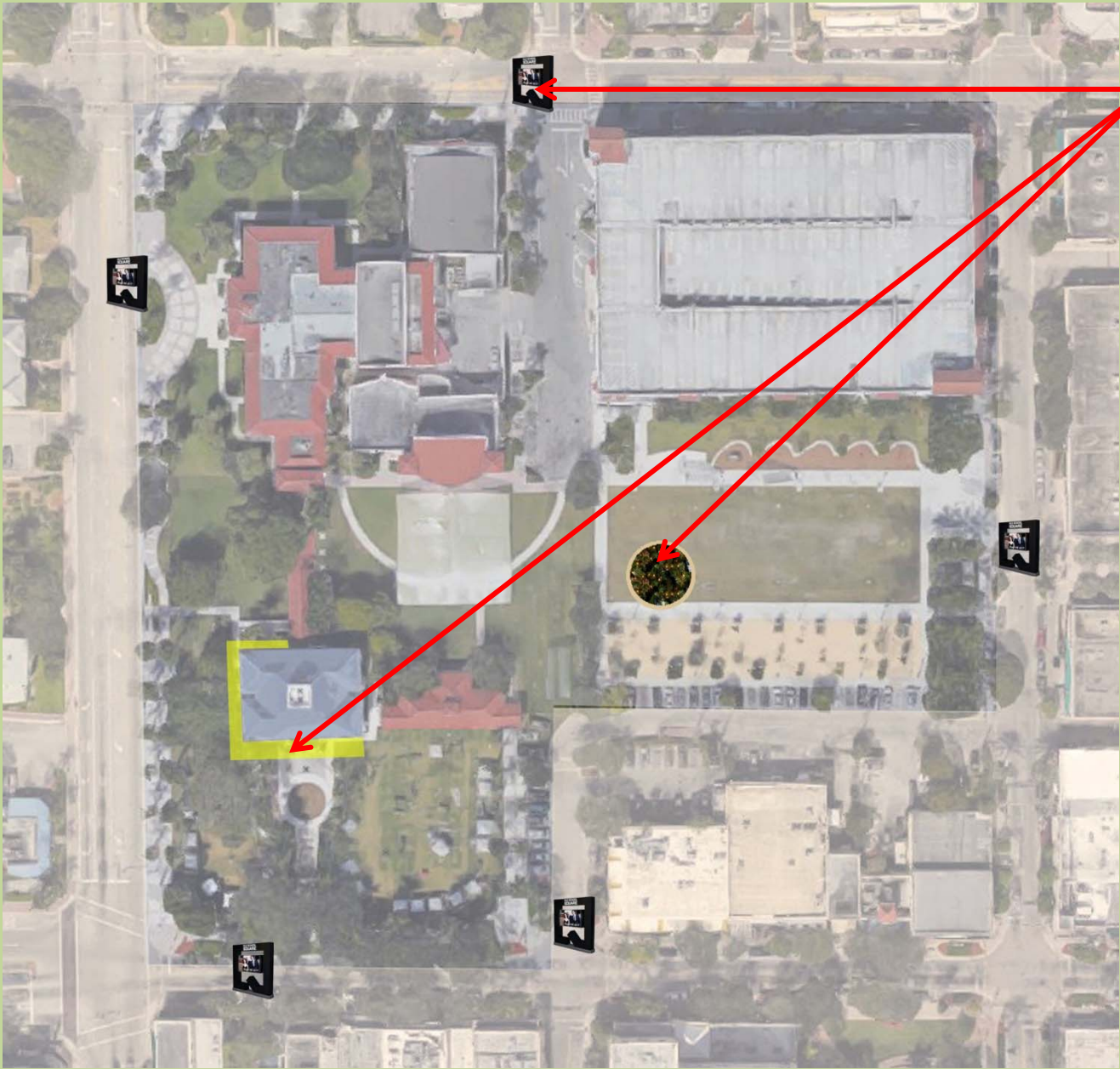




# OLD SCHOOL SQUARE







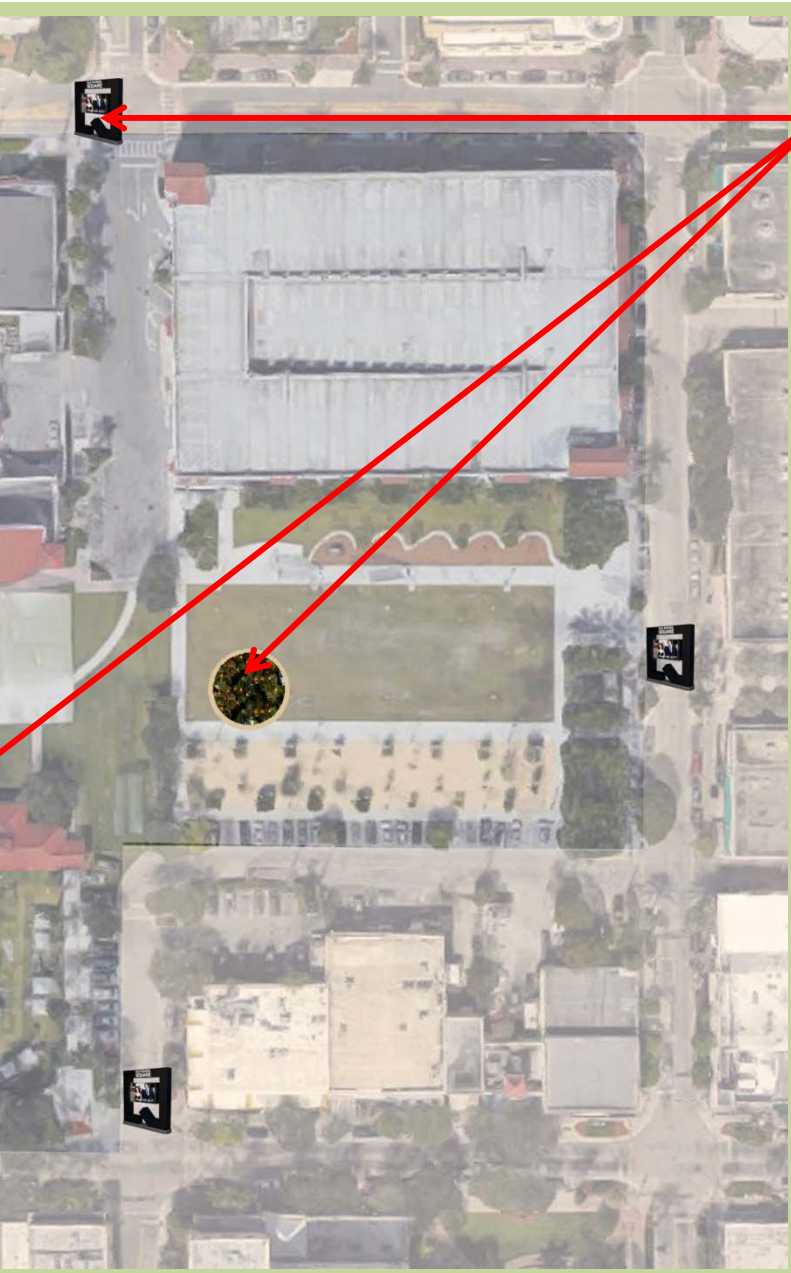
Phase 1:  
\$515,000



# OLD SCHOOL SQUARE







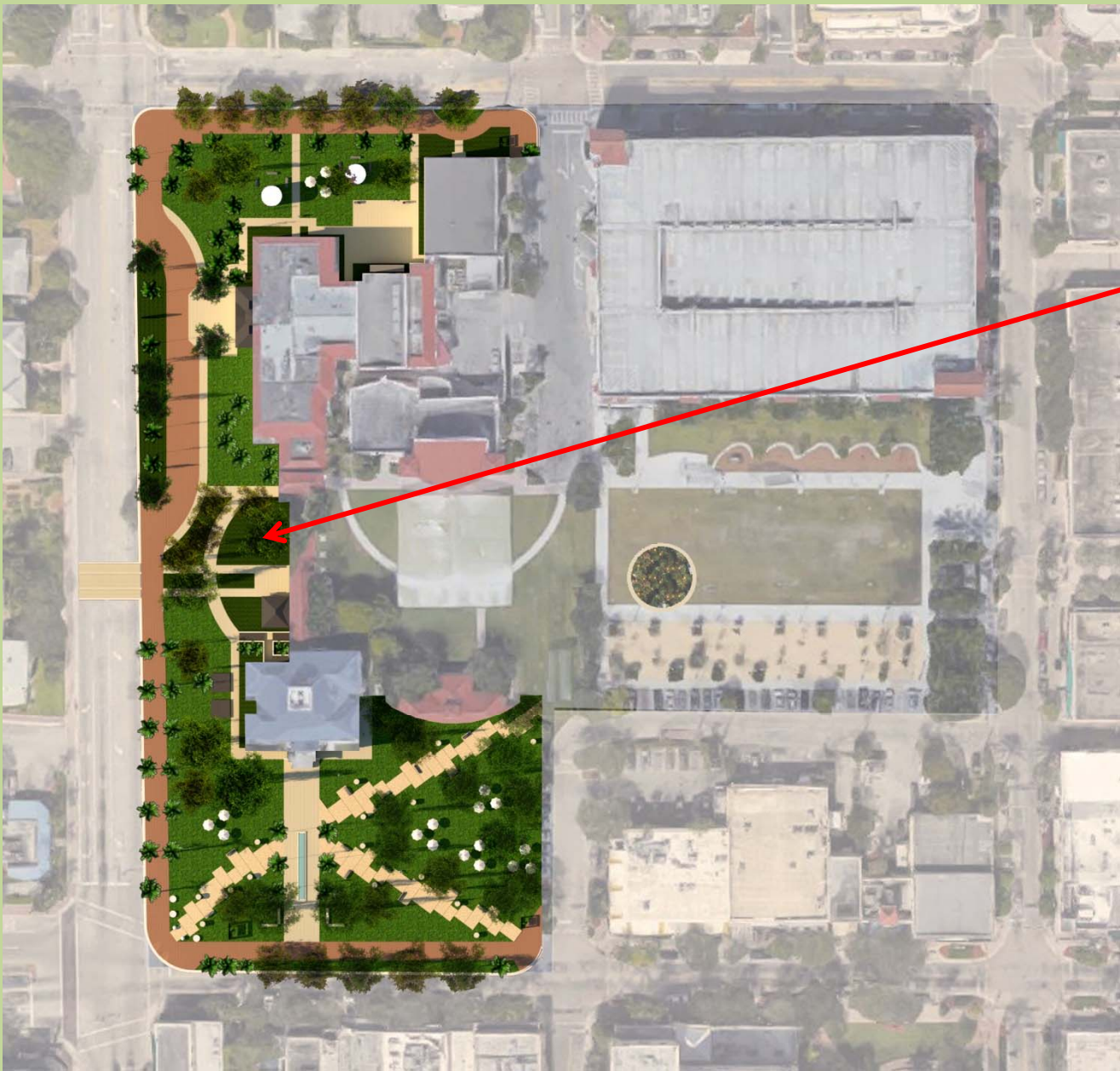
Phase 1:  
\$515,000



**OLD SCHOOL  
SQUARE**







Phase 1:  
\$515,000

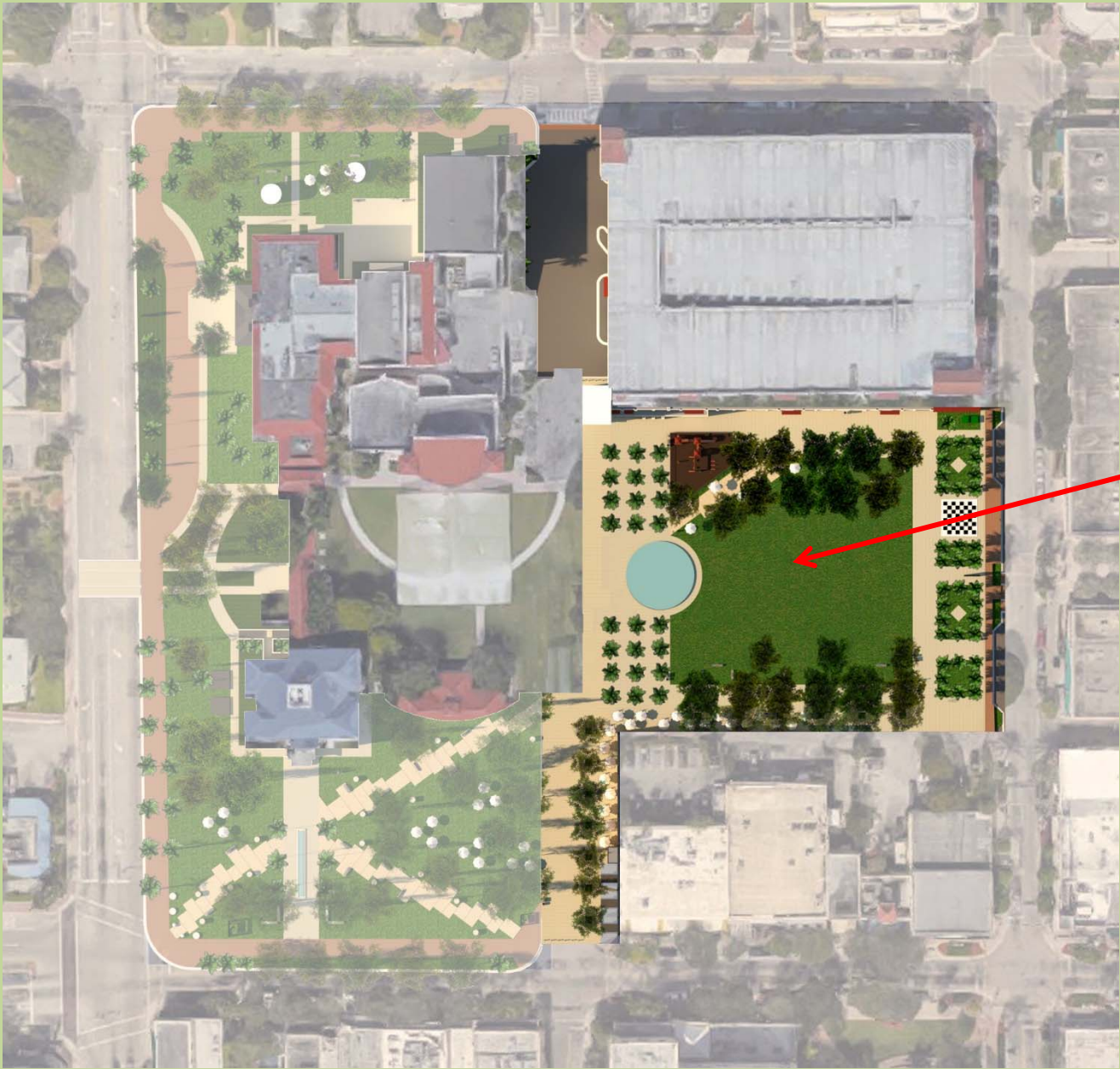
Phase 2:  
\$2,286,000



# OLD SCHOOL SQUARE







Phase 1:  
\$515,000

Phase 2:  
\$2,286,000

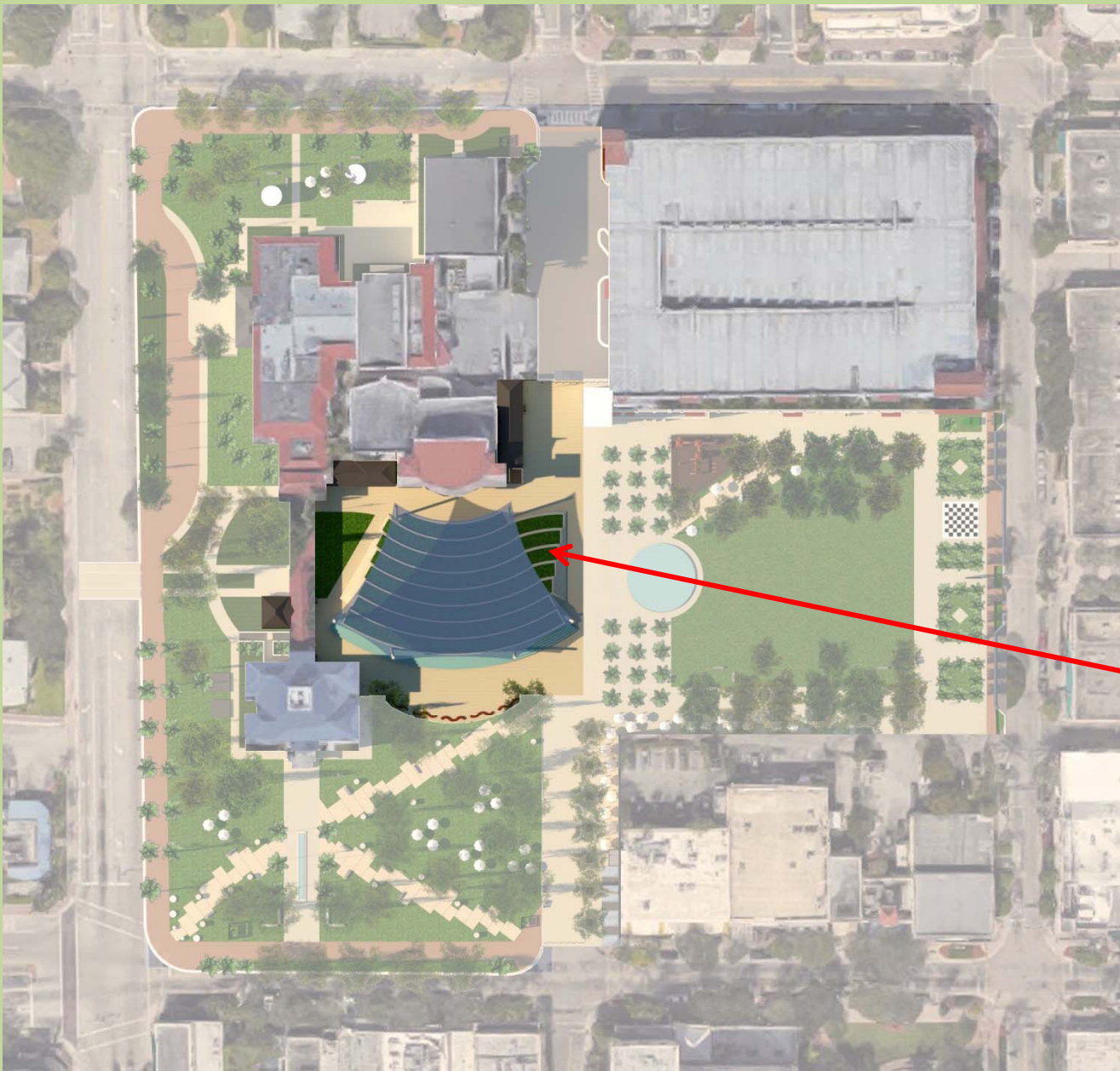
Phase 3:  
\$3,468,000



# OLD SCHOOL SQUARE







Phase 1:  
\$515,000

Phase 2:  
\$2,286,000

Phase 3:  
\$3,468,000

Phase 4:  
\$5,105,000



# OLD SCHOOL SQUARE







Phase 1:  
\$515,000

Phase 2:  
\$2,286,000

Phase 3:  
\$3,468,000

Phase 4:  
\$5,105,000

Total:  
\$11,374,000



# OLD SCHOOL SQUARE





PRELIMINARY ESTIMATE OF PROBABLE COSTS OF PROJECTS		
		TOTAL COST
<b>Phase 1</b>	<b>Date: 2017</b>	<b>\$ 515,000</b>
Surveys, Christmas Tree Foundation with Electric, 2 large signs + 3 small signs and Façade Lighting for Cornell Museum		
<b>Phase 2 - Swinton and Atlantic Frontages</b>	<b>Date: TBD</b>	<b>\$ 2,286,000</b>
Crest and Field House Façade Lighting, Front of Cornell, Swinton Lawn, NE 1st St Lawn		
<b>Phase 3 - East Lawn</b>	<b>Date: TBD</b>	<b>\$ 3,468,000</b>
East Lawn, Palm Court, Overhead Garage Doors, NE 1st Ave, Garage Lighting/Elev.		
<b>Phase 4 - Pavilion</b>	<b>Date: TBD</b>	<b>\$ 5,105,000</b>
Pavilion with shade structure, fountain, 2 new bathrooms bldgs, new concessions building		
<b>TOTAL CONSTRUCTION COSTS</b>		<b>\$ 11,374,000</b>
*This opinion of probable construction cost was prepared without the benefit of final construction documents. They represent the Designer's best opinion of current available data. Owner should obtain detailed cost estimates once final construction documents are available.		



**OLD SCHOOL  
SQUARE**





<b>Phase 1</b>	<b>Date: 2017</b>	<b>\$ 515,000</b>
Surveys, Christmas Tree Foundation with Electric, 2 large signs + 3 small signs and Façade Lighting for Cornell Museum		
<b>Documenting Existing Conditions</b>	\$	35,000
Survey	\$	30,000
Tree Survey	\$	5,000
Surveys	\$	35,000
<b>Christmas Tree Foundation Relocation</b>	\$	200,000
Christmas Tree foundation	\$	199,980
Christmas Tree Electrical Relocation		
Demolition of Existing Tree Pad		
<b>Signs-Phase 1</b>	\$	180,000
Signs-large	\$	90,000
Signs-small	\$	90,000
<b>Historic Building Lighting</b>	\$	100,000
Cornell Façade Lighting	\$	100,056



**OLD SCHOOL  
SQUARE**





<b>Phase 2 - Swinton and Atlantic Frontages</b>	<b>\$ 2,286,000</b>
<b>Date: TBD</b>	
Crest and Field House Façade Lighting, Front of Cornell, Swinton Lawn, NE 1st St Lawn	
<b>Historic Building Lighting</b>	<b>\$ 200,000</b>
Crest Façade Lighting	\$ 100,056
Field House Façade lighting	\$ 100,056
<b>Front of Cornell Museum Improvements</b>	<b>\$ 998,000</b>
Scored Concrete Paving - Drivable	\$ 65,291
Concrete - large block path	\$ 231,640
Sculpture pads-Small	\$ 19,800
Reflecting Pond	\$ 66,000
Relocate 2 statue	\$ 2,640
Relocate name bricks/plaques	\$ 4,290
Art lighting	\$ 65,815
Moonlighting at Atlantic	\$ 9,900
Benches standard	\$ 53,460
Trash cans	\$ 17,787
Pet waste	\$ 792
Bike Racks	\$ 2,006
Light Bollards	\$ 23,760
Linear In ground lights - Atlantic side	\$ 52,800
site electrical	\$ 72,230
Site Demo	\$ 43,250
Tree Trimming	\$ 6,600
New Deciduous Trees	\$ 17,952
Relocated Deciduous	\$ 33,000
Tree removal-deciduous	\$ 13,860
Relocated palm	\$ 14,256
Sod and regrading	\$ 90,617
Irrigation	\$ 90,617
<b>Swinton Improvements</b>	<b>\$ 428,000</b>
New Drive at Swinton	\$ 125,195
Scored Concrete Paving - Drivable	\$ 76,559
Breezeway lighting	\$ 29,700
Trash cans	\$ 15,246
Pet waste	\$ 792
Bike Racks	\$ 2,006

Light Bollards	\$ 11,880
Site electrical	\$ 12,672
Site Demo	\$ 34,839
Decorative Landscaping	\$ 64,492
New Deciduous Trees	\$ 6,336
Relocated Deciduous	\$ 6,600
Tree removal-deciduous	\$ 4,620
Relocated palm	\$ 2,376
Sod and Regrading	\$ 4,544
Irrigation	\$ 30,340
<b>City Sidewalks</b>	<b>\$ 362,000</b>
Concrete Brick Look paver sidewalk	\$ 242,497
Demo Existing sidewalk	\$ 96,999
Speed table/crosswalk	\$ 22,315
<b>North Field House Improvements</b>	<b>\$ 258,000</b>
Scored Concrete Paving - Drivable	\$ 52,900
Sculpture pads-Large	\$ 10,560
Movie projection screen 25 x 25	\$ 13,200
Art lighting	\$ 8,775
Benches standard	\$ 21,384
Trash cans	\$ 15,246
Pet waste	\$ 792
Bike Racks	\$ 2,006
Light Bollards	\$ 5,940
Site electrical	\$ 4,488
Site Demo	\$ 35,296
Decorative Landscaping	\$ 17,368
New Deciduous Trees	\$ 1,056
Relocated palm	\$ 2,376
Sod and Regrading	\$ 29,907
Irrigation	\$ 36,854
<b>Relocate A/C</b>	<b>\$ 40,000</b>
Relocate A/C	\$ 39,600



# OLD SCHOOL SQUARE





Phase 3 - East Lawn	Date: TBD	\$ 3,468,000
East Lawn, Palm Court, Overhead Garage Doors, NE 1st Ave, Garage Lighting /Elev.		
<b>East Lawn</b>		\$ 1,165,000
Scored Concrete Paving - Drivable		\$ 265,398
Playground equipment		\$ 39,600
Playground surface		\$ 34,432
Playground fence		\$ 16,401
Field Lighting		\$ 82,500
Picnic tables		\$ 52,800
Trash cans		\$ 33,033
Pet waste		\$ 1,584
Bike Racks		\$ 2,006
Light Bollards- Pineapple grove		\$ 43,560
Linear In ground - Field area		\$ 26,400
Site electrical		\$ 46,913
Site Demo		\$ 147,491
Relocated palm		\$ 39,600
New Deciduous Trees		\$ 35,904
Relocated Deciduous		\$ 72,600
Tree removal-deciduous		\$ 50,820
Sod and Regrading		\$ 87,057
Irrigation		\$ 87,057
<b>Palm Court</b>		\$ 765,000
Scored Concrete Paving - Drivable		\$ 156,286
Splash fountain paving		\$ 38,867
Splash fountain plumbing		\$ 178,200
Splash Pad Lighting		\$ 39,600
Palm lighting		\$ 79,200
Trash cans		\$ 15,246
Removable Bollards		\$ 33,000
Site electrical		\$ 36,432
New Palm Court trees		\$ 126,720
Relocated Deciduous		\$ 59,400
Irrigation		\$ 1,584
<b>Garage Overhead Doors</b>		\$ 362,000
New Glass up and over doors		\$ 332,148

Demo of garage wall	\$ 30,064
<b>SE 1st Avenue Improvements</b>	\$ 327,000
Scored Concrete Paving - Drivable	\$ 113,753
Removable Bollards	\$ 16,500
Area Lighting	\$ 52,800
Picnic tables	\$ 39,600
Benches standard	\$ 39,204
Site electrical	\$ 16,104
Site Demo	\$ 32,443
New Deciduous Trees	\$ 7,392
Tree removal-deciduous	\$ 9,240
Irrigation	\$ 462
<b>Stair and Elevator Tower</b>	\$ 747,000
Garage Elevator/ Stair Lobby Eyebrows	\$ 94,348
Garage Elevator	\$ 191,400
Elevator/Stair Shell	\$ 268,884
Stair tower lighting	\$ 26,888
Elevator Storefront walls	\$ 165,160
<b>Garage Façade Lighting</b>	\$ 102,000
Garage Façade Lighting	\$ 101,825



# OLD SCHOOL SQUARE





<b>Phase 4 - Pavilion</b>	<b>Date: TBD</b>	<b>\$ 5,105,000</b>
Pavilion with shade structure, fountain, 2 new bathrooms bldgs, new concessions building		
<b>Covered Pavilion</b>		<b>\$ 4,313,000</b>
Pavilion structure on grade		\$ 375,144
Pavilion structure over storage		\$ 376,200
Tensile Structure		\$ 2,253,108
Pavilion steps		\$ 80,487
Pavilion-structure		\$ 365,112
Fountain Plumbing		\$ 165,000
Artificial turf		\$ 135,552
Pavilion Lighting		\$ 49,500
Pavilion Fountain-lighting		\$ 40,920
Scored Concrete Paving-Drivable		\$ 197,407
Portable Retractable fencing		\$ 26,433
Benches - curved		\$ 64,152
Trash cans		\$ 7,623
Site electrical		\$ 27,720
Site Demo		\$ 51,737
Relocated Deciduous		\$ 26,400
Tree removal-deciduous		\$ 23,100
Relocated palm		\$ 3,960
Sod and regrading		\$ 4,818
Irrigation		\$ 38,706
<b>New Bathroom/Concessions</b>		<b>\$ 792,000</b>
New concessions		\$ 156,024
New Toilets building		\$ 591,360
Demo of old toilet building		\$ 23,553
Trash cans		\$ 15,246
Relocated palm		\$ 5,544



# OLD SCHOOL SQUARE





