

Delray Beach Community Redevelopment Agency

Regular Board Meeting

Tuesday, March 12, 2019
10:00 a.m.





ITEM 6B.

OFFICE OF ECONOMIC DEVELOPMENT PRESENTATION

BUSINESS NAVIGATOR



Business Navigator

- New Level of Service to Assist Business Owners, Executives and Representatives
- > than 18 City Departments, Divisions and Offices
- Key Business Navigator Services:
 - Site Selection
 - Site Plan Approval Process
 - City Licenses & Permitting
 - Business & Commercial Property Improvement Funding Assistance
 - Technical Assistance & Business Counseling (through Area Partners)
 - Local Procurement Opportunities
 - Community and other Agency Connections



Helping Business Find the Best Path Forward



ITEM 9A.

LETTERS OF INTENT
606 W. ATLANTIC AVENUE



LETTERS OF INTENT

606 W. ATLANTIC AVENUE





ITEM 10A 1.

REVIEW OF PROTEST TO RFP CRA NO. 2018-08 FIXED-ROUTE TRANSPORTATION SERVICES AND FINDINGS OF THE EXECUTIVE DIRECTOR



ITEM 10A 2.

AWARD OF RFP FIXED ROUTE TRANSPORTATION SERVICES

Downtowner Holdings, LLC



AWARD OF RFP FIXED ROUTE TRANSPORTATION SERVICES

Proposers:

- Downtowner Holdings, LLC
- First Transit, Inc.
- Maruti Fleet & Management, LLC



AWARD OF RFP FIXED ROUTE TRANSPORTATION SERVICES

- Vehicles will be gas/propane
- Proposer will provide a mobile app for requesting rides compatible with Android and iPhone devices
- Riders view vehicles, stops and ETA's in real-time via the Rider App
- When requesting a pickup, riders will immediately be given an estimated wait time based on driver availability
- All vehicles will be ADA accessible
- Drivers will utilize a Driver App to enable real-time tracking and counting passengers



Standard vehicles	Ford Cutaway Shuttle (or similar)
Standard Passengers	14
Wheelchair Passengers	2
Quantity	3



AWARD OF RFP FIXED ROUTE TRANSPORTATION SERVICES

Board Options:

1. Award RFP to Downtowner
2. Award RFP to another respondent
3. Table the item and have top 2 respondents present at April 9th CRA Board Meeting. Award at same meeting
4. Reject all Proposals and re-issue the RFP

ITEM 10B.

AWARD OF RFP

POINT TO POINT TRANSPORTATION SERVICES

BeeFree, LLC, d/b/a Freebee





AWARD OF RFP POINT-TO-POINT TRANSPORTATION SERVICES

Proposers:

- BeeFree, LLC, d/b/a Freebee
- Delray Downtowner, Inc.
- L3 LLC, d/b/a O-Cartz
- Round the Town, LLC
- The Free Ride, Inc.
- The Nickel Ride, LLC



AWARD OF RFP

POINT TO POINT TRANSPORTATION SERVICES

- Charging Stations and Vehicle Electricity
- App Development, Maintenance and Licensing
- Live Data Integration
- Program and Performance Management
- Vehicle Storage
- Marketing, PR, and Outreach
- Sponsorship, /Advertising Sales
- Vehicle Maintenance
- Miscellaneous Supplies (Cleaning, etc.)





AWARD OF RFP POINT-TO-POINT TRANSPORTATION SERVICES

Board Options:

1. Award RFP to BeeFree, LLC, d/b/a Freebee
2. Award RFP to another respondent
3. Table the item and have top 2 respondents present at April 9th CRA Board Meeting. Award at same meeting
4. Reject all Proposals and re-issue the RFP



ITEM 10C.

INTERLOCAL AGREEMENT DOWNTOWN DEVELOPMENT AUTHORITY FOR DESTINATION EVENTS

FUNDING AMOUNT: \$25,000



INTERLOCAL AGREEMENT DOWNTOWN DEVELOPMENT AUTHORITY FOR DESTINATION EVENTS

- Partial Sponsorship for 2 events designed to:
 - Help attract visitors
 - Provide economic activity in the downtown area
 - Promote the overall downtown area
- Pineapple Grove Arts & Music Festival - \$12,500
 - Thursday, April 25, 2019
- Frog Alley Caribbean Festival - \$12,500
 - Saturday, June 8, 2019



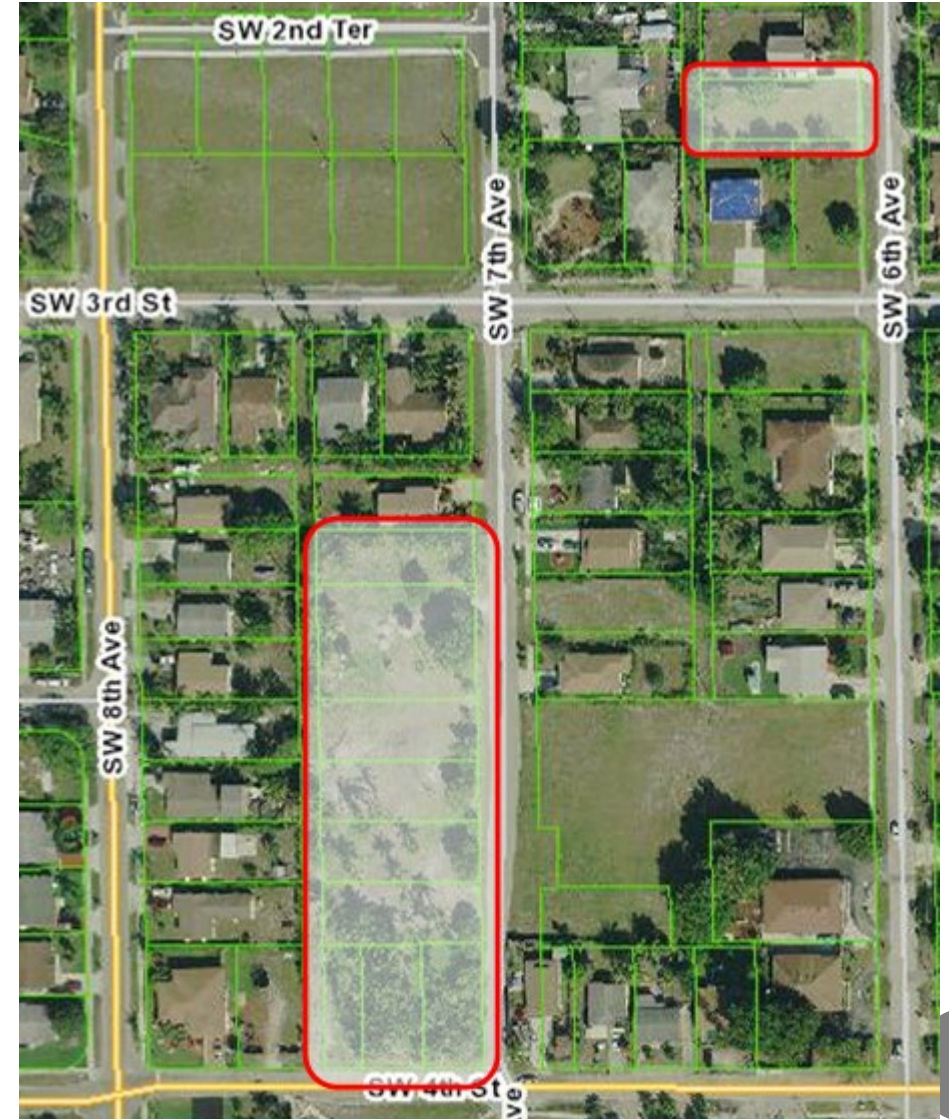
ITEM 10D.

**ISSUE REQUEST FOR PROPOSALS
DISPOSITION AND DEVELOPMENT
OF CARVER ISLE**



ISSUE REQUEST FOR PROPOSALS DISPOSITION AND DEVELOPMENT OF CARVER ISLE

- Not-For-Profit Entities
 - Construction
 - Income Qualifying Perspective Buyers
 - Sale of Homes
 - Restricted Long Term for Workforce / Affordable Housing
- CRA will absorb cost of the following:
 - A/E Design Services
 - Site Preparation
 - Development & Permit Fees
 - Construction Costs
 - Streetscape Improvements





ITEM 10E.

RESOLUTION NO. 2019-05

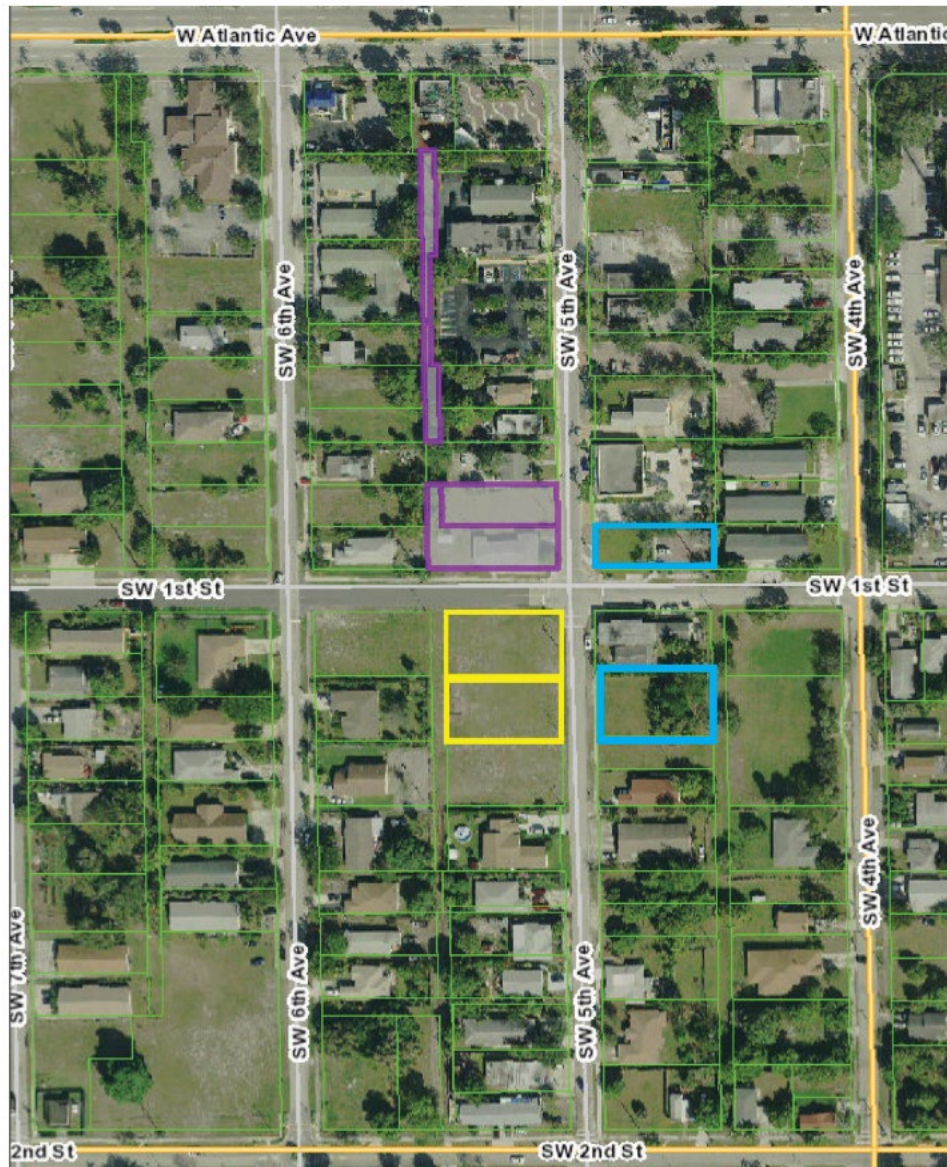
**URGING LEGISLATURE TO VOTE
AGAINST HB 9 AND SB 1054**



COMMUNITY REDEVELOPMENT AGENCY
DELRAY BEACH CRA



88 & 94 SW 5th Avenue



DELRAY BEACH
COMMUNITY
REDEVELOPMENT
AGENCY

CARVER SQUARE WORKFORCE HOUSING

CRA BOARD PRESENTATION
MARCH 12, 2019



with



BROOKS + SCARPA ARCHITECTS
808 East Las Olas Boulevard, Ste. 101
Fort Lauderdale, Florida 33301

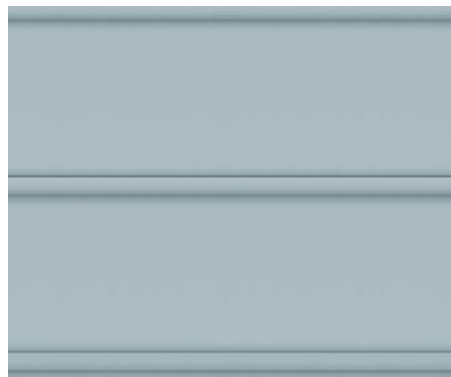




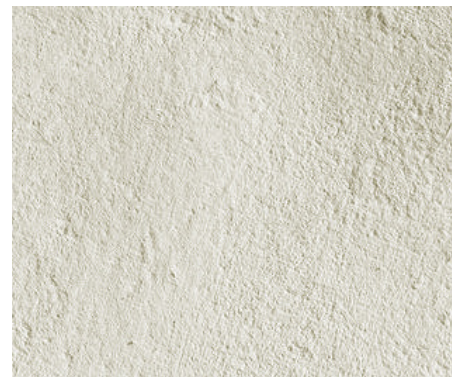
METAL ROOF



BOARD AND BATTEN



CEMENT BOARD SIDING



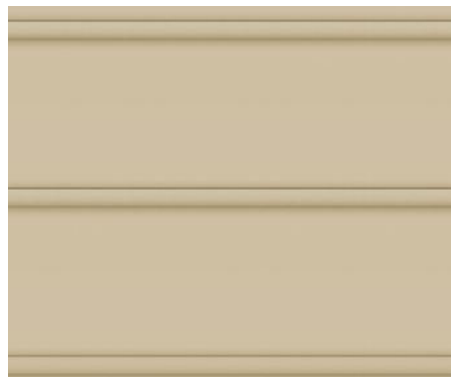
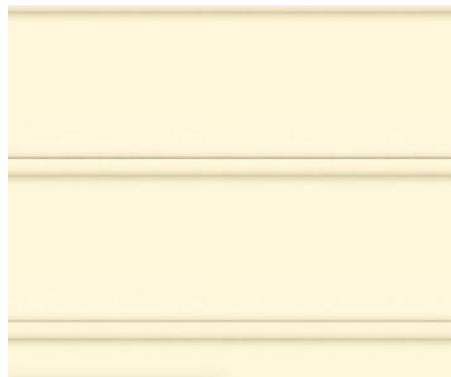
STUCCO



COMPOSITE SHUTTERS AND RAILINGS



ALUMINUM OR VINYL WINDOWS AND DOORS



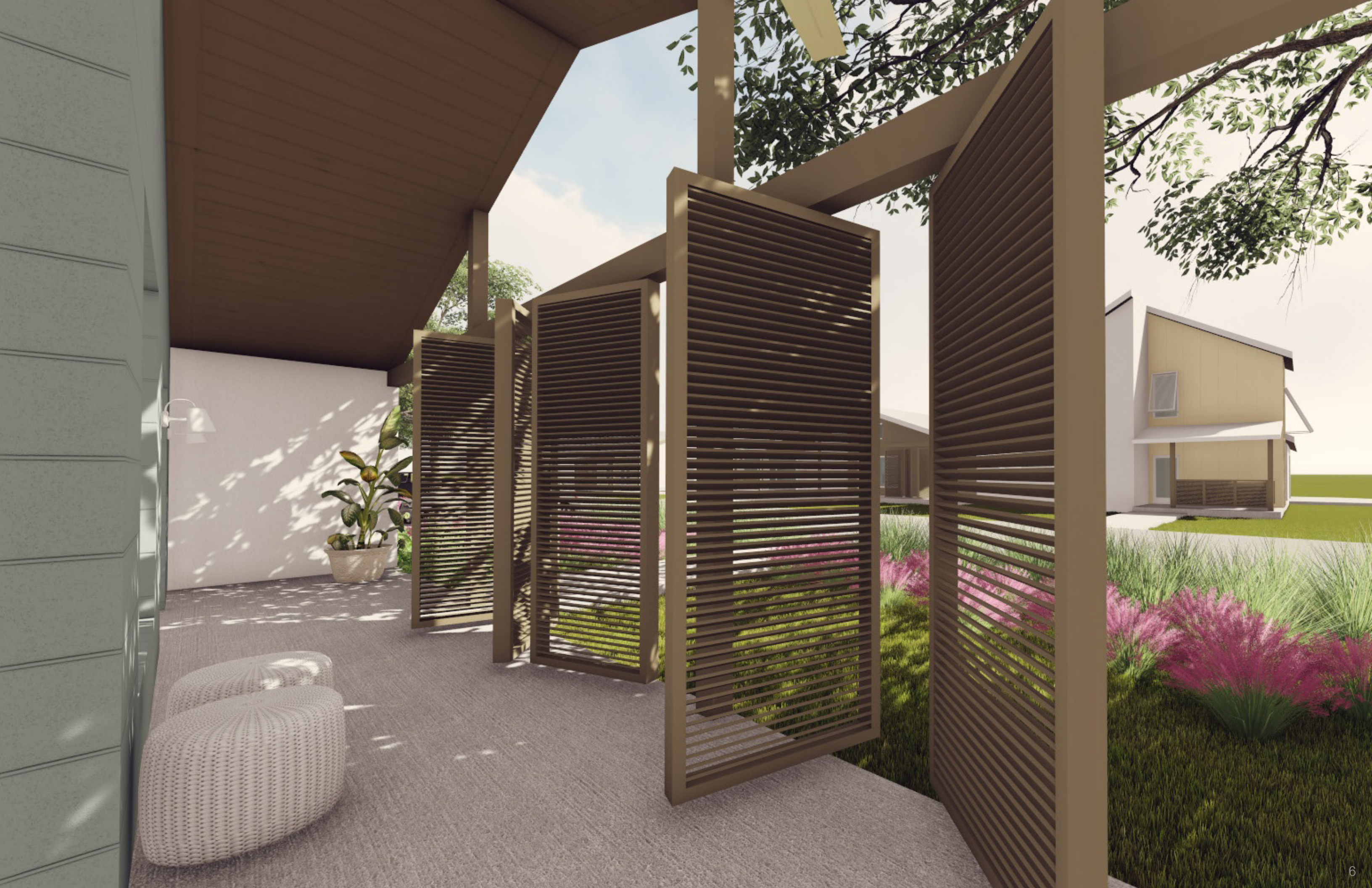
pastel colors drawn from tropical vernacular architecture

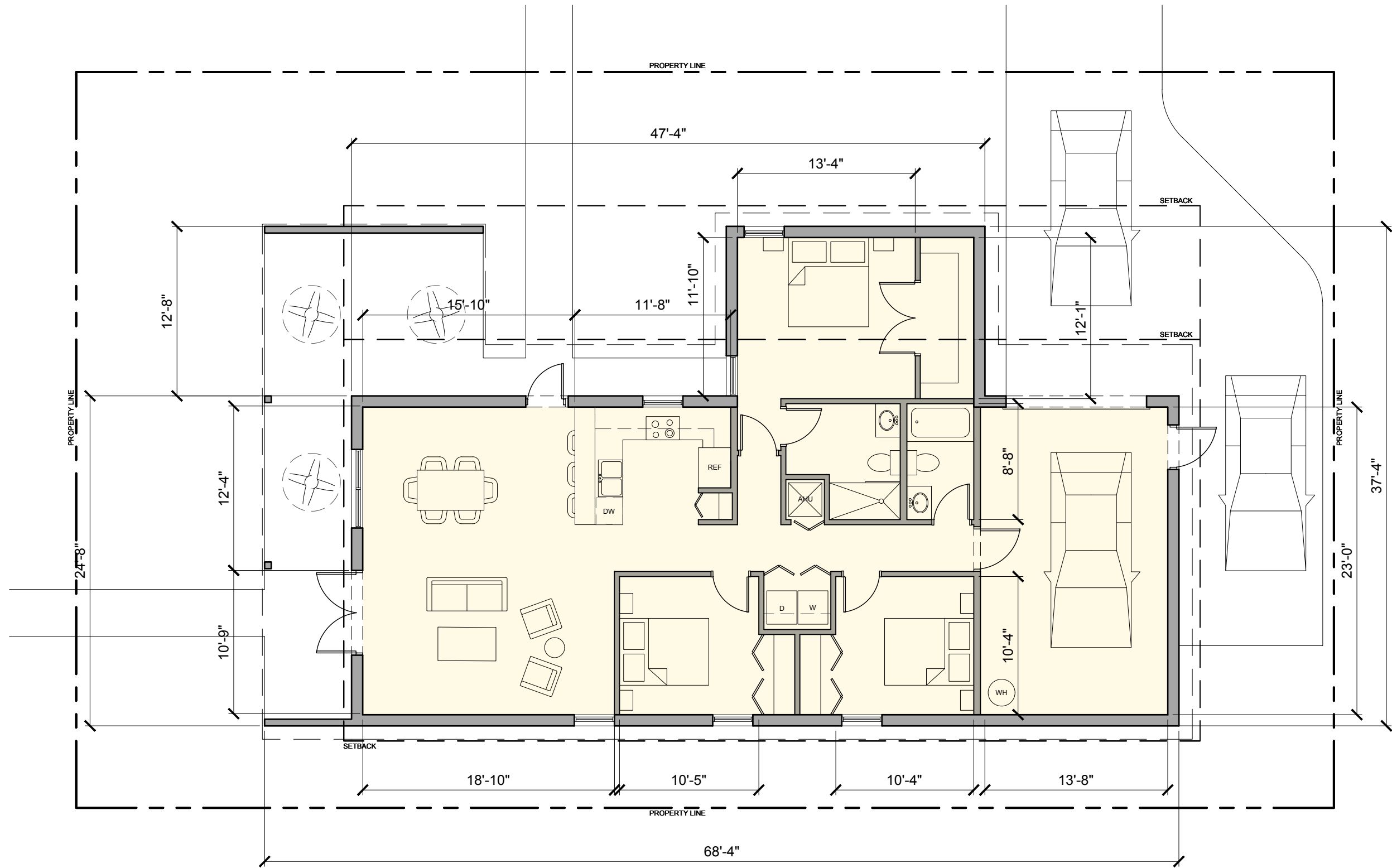
THE MANGO 1

1-Story
3-Bedroom
2-Bathroom

1600 sf





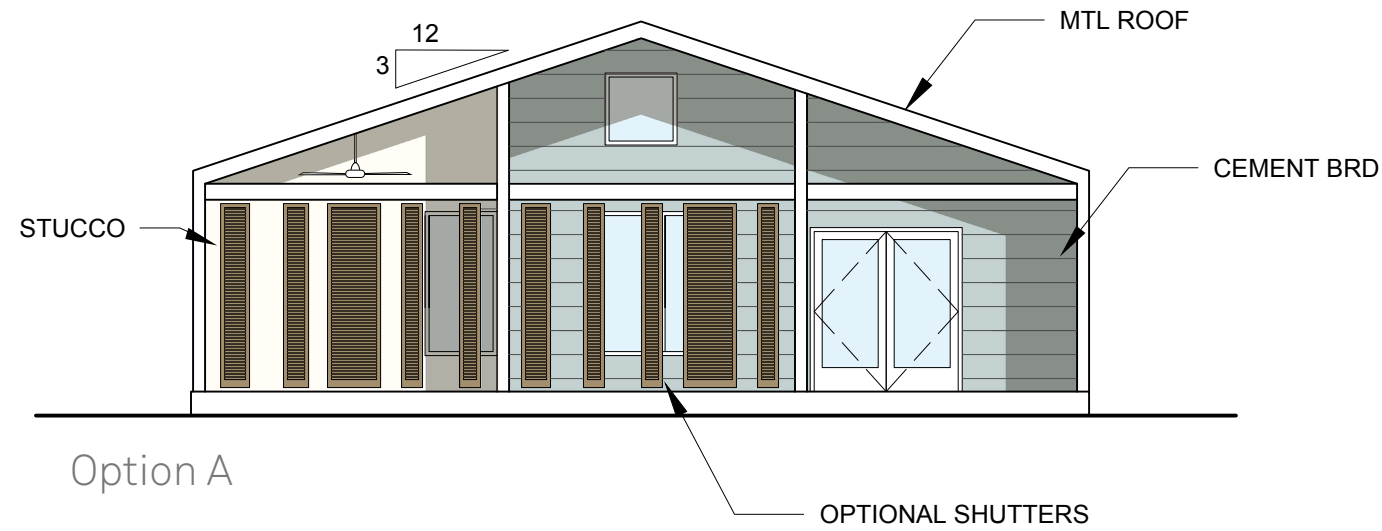


Mango 1 (Model D)
Corner Lot Plan

16'-6"
T.O. ROOF

9'-8"
T.O. SPRING LINE

00'-0"
T.O. GRADE



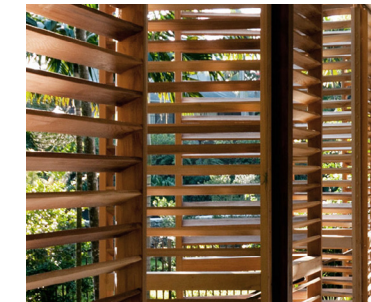
Metal Roof



Colored Cement Board Siding



Painted Stucco



Composite Shutters or Railings

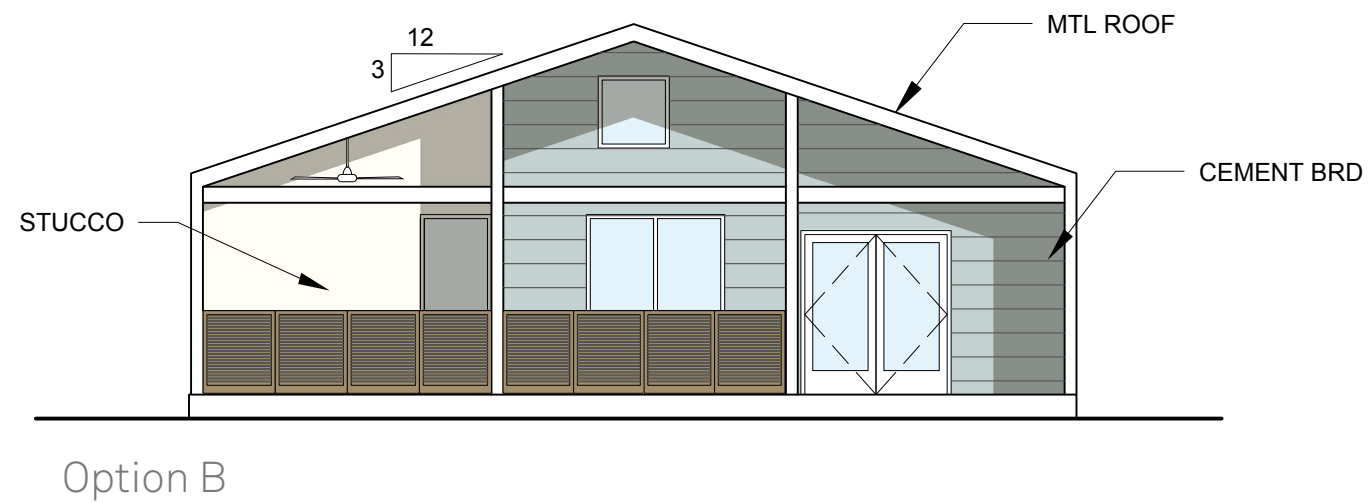


Aluminum or Vinyl Impact-Resistant Windows and Doors

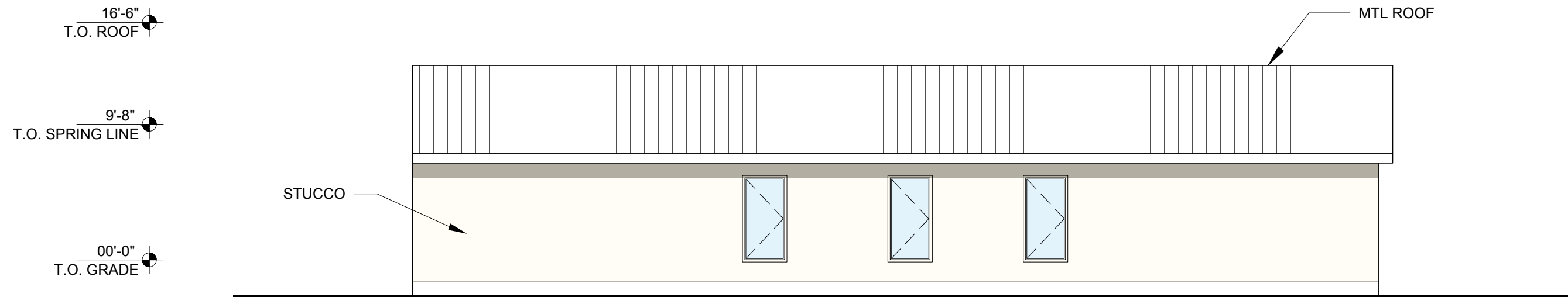
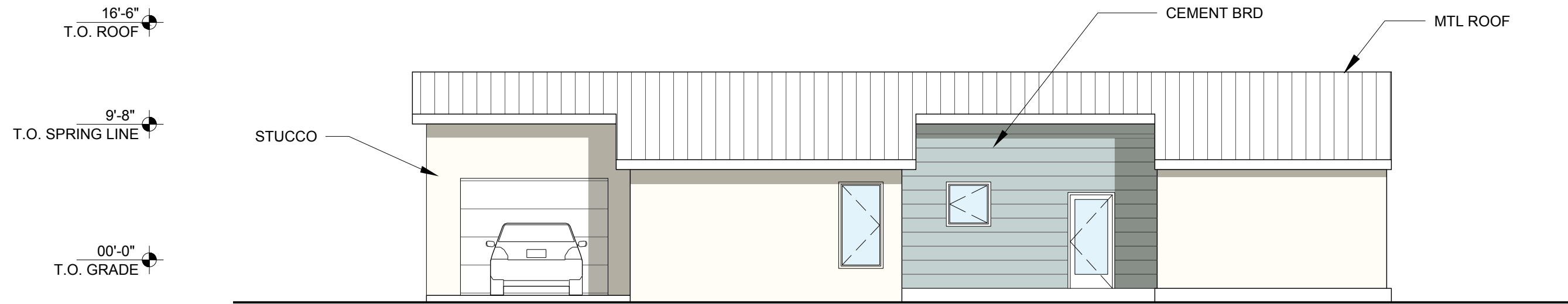
16'-6"
T.O. ROOF

9'-8"
T.O. SPRING LINE

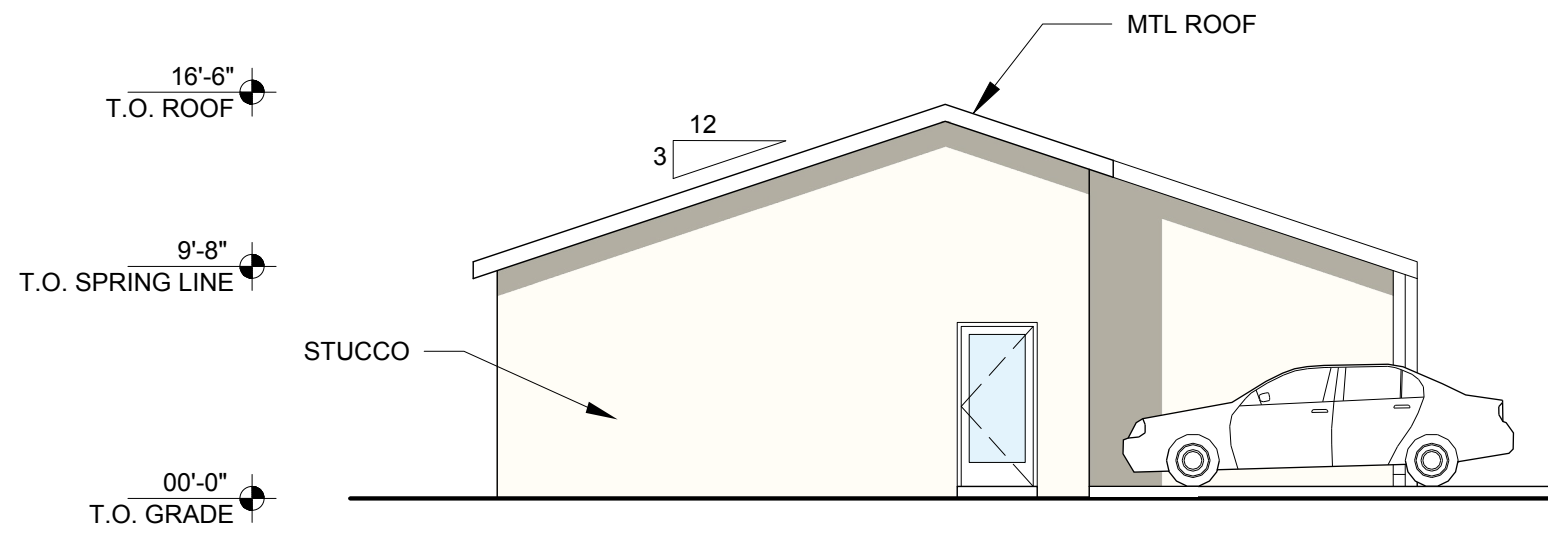
00'-0"
T.O. GRADE



Mango 1 (Model D)
Corner Lot
Front Elevations



Mango 1 (Model D)
 Corner Lot
 Side Elevations



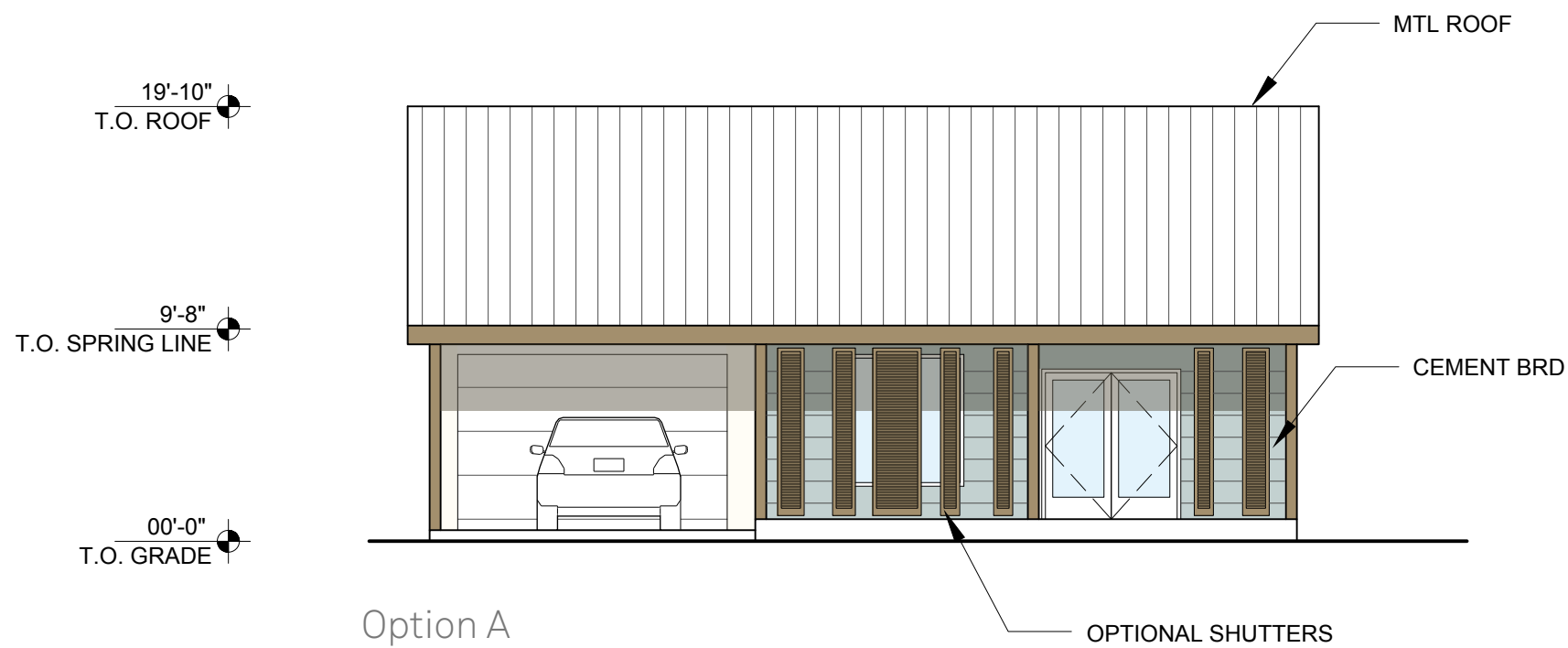
Mango 1 (Model D)
Corner Lot
Rear Elevation

THE MANGO 2

1-Story
3-Bedroom
2-Bathroom

1600 sf

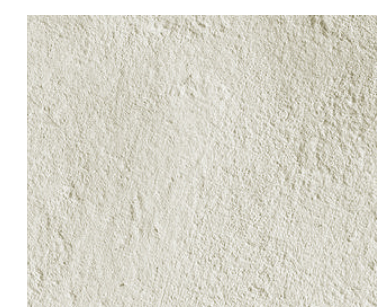




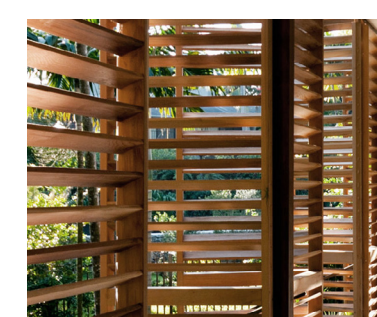
Metal Roof



Colored Cement Board Siding



Painted Stucco

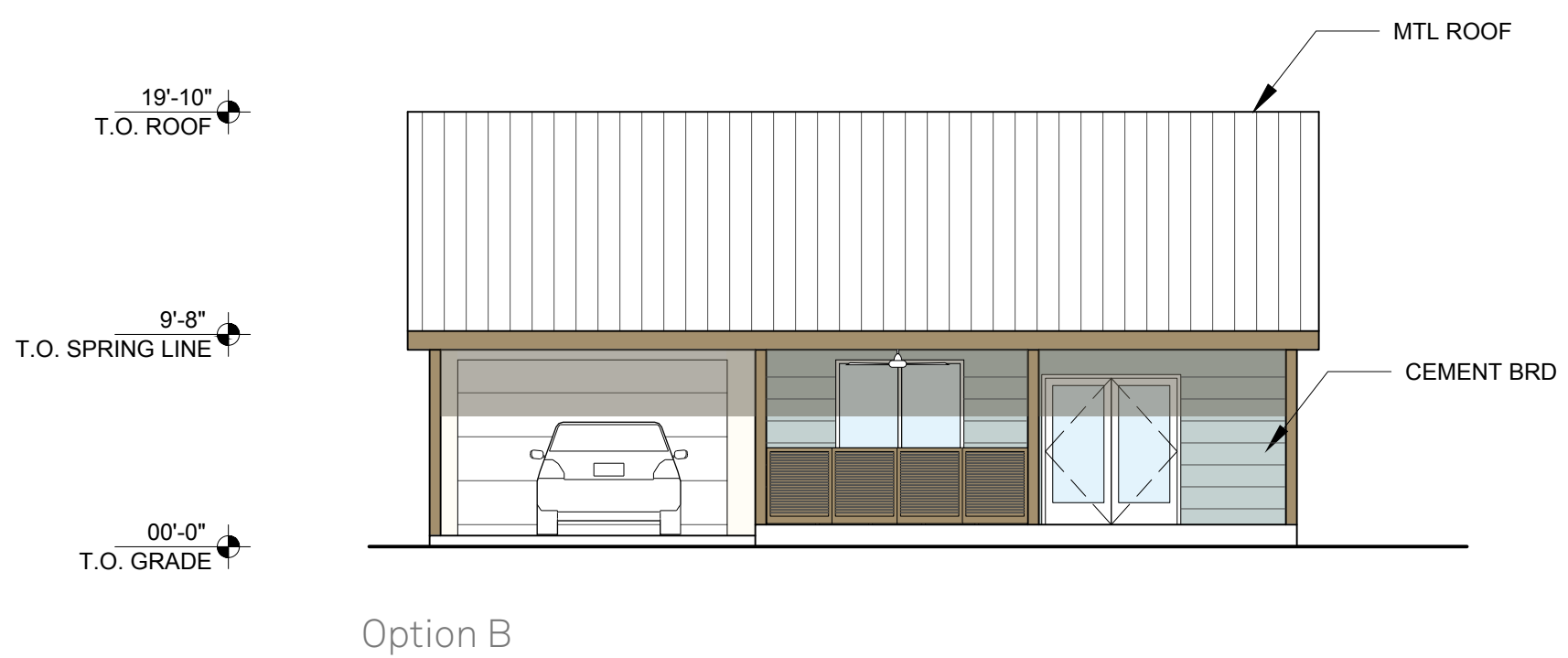


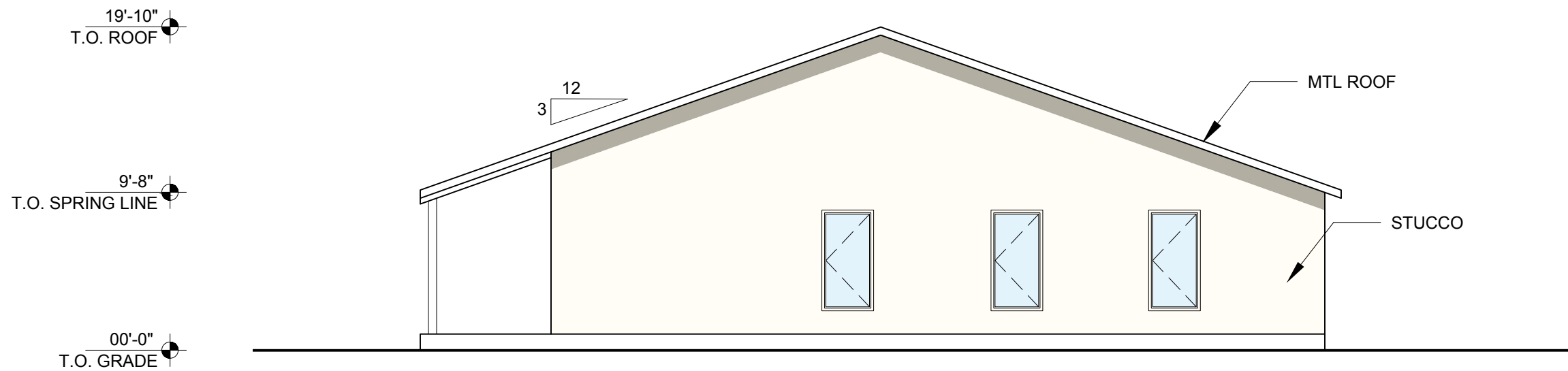
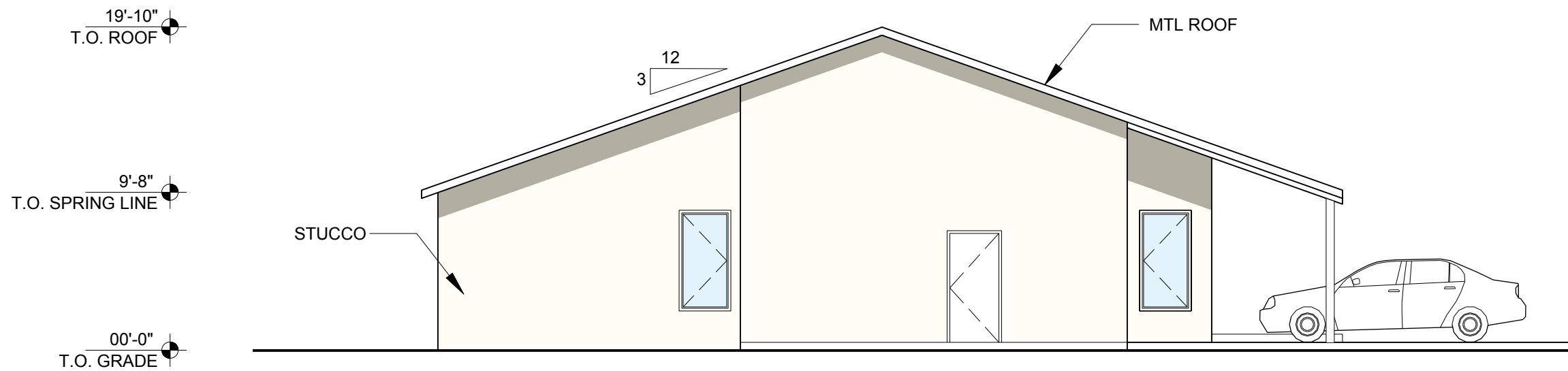
Composite Shutters or Railings



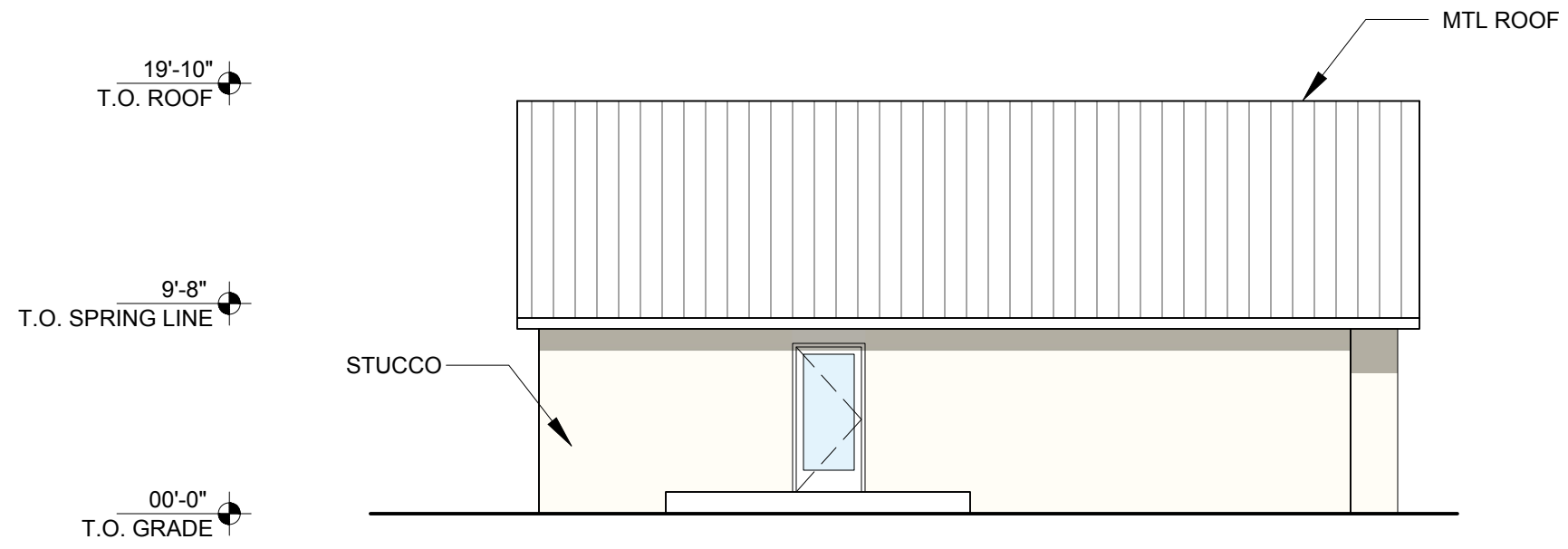
Aluminum or Vinyl Impact-Resistant Windows and Doors

Mango 2 (Model D) Infill Lot Front Elevation





Mango 2 (Model D)
Infill Lot
Side Elevations



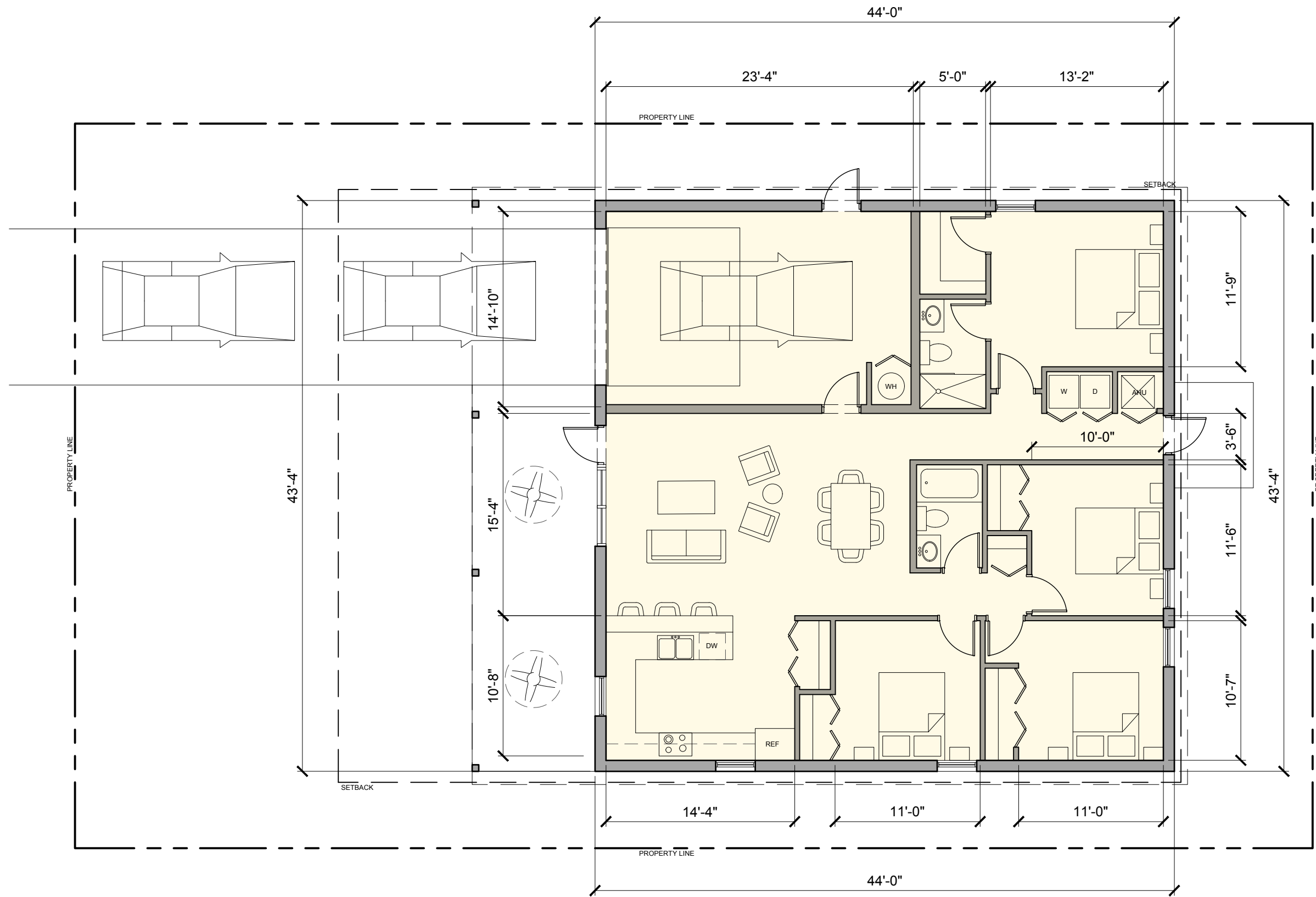
Mango 2 (Model D)
Infill Lot
Rear Elevation

THE TAMARIND

1-Story
4-Bedroom
2-Bathroom

1760 sf



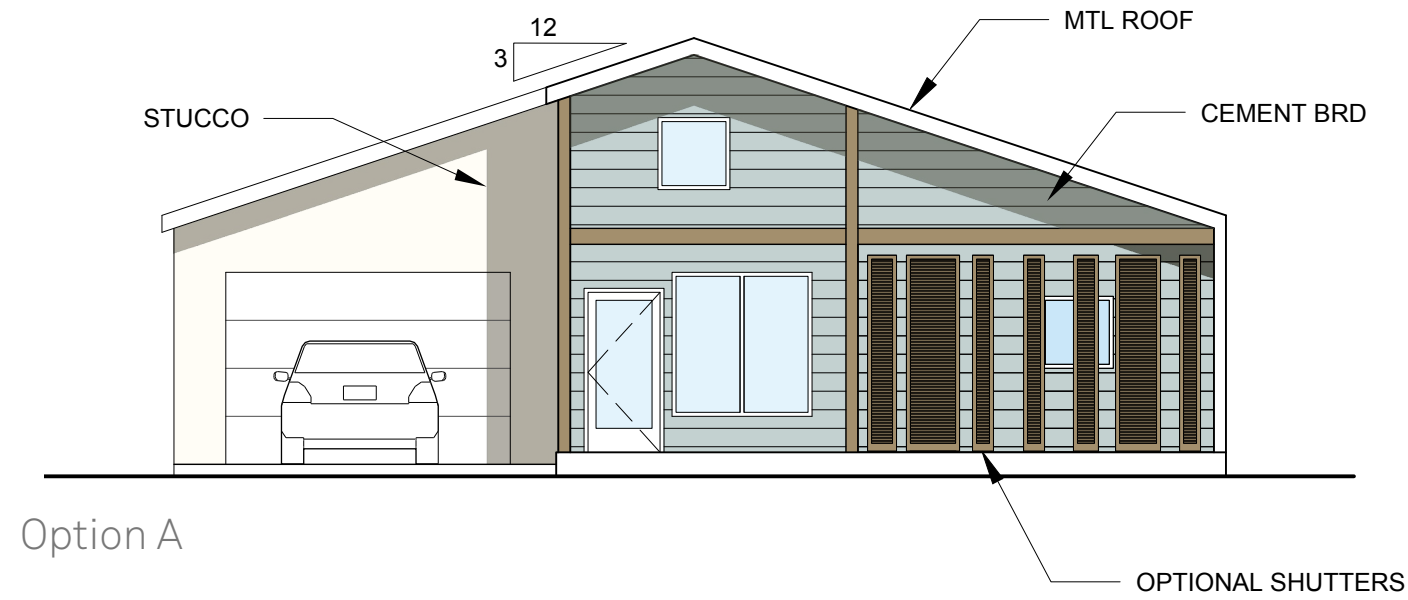


Tamarind (Model C)
Plan

18'-4"
T.O. ROOF

9'-8"
T.O. SPRING LINE

00'-0"
T.O. GRADE



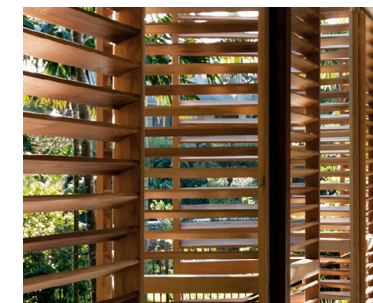
Metal Roof



Colored Cement Board Siding



Painted Stucco



Composite Shutters or Railings

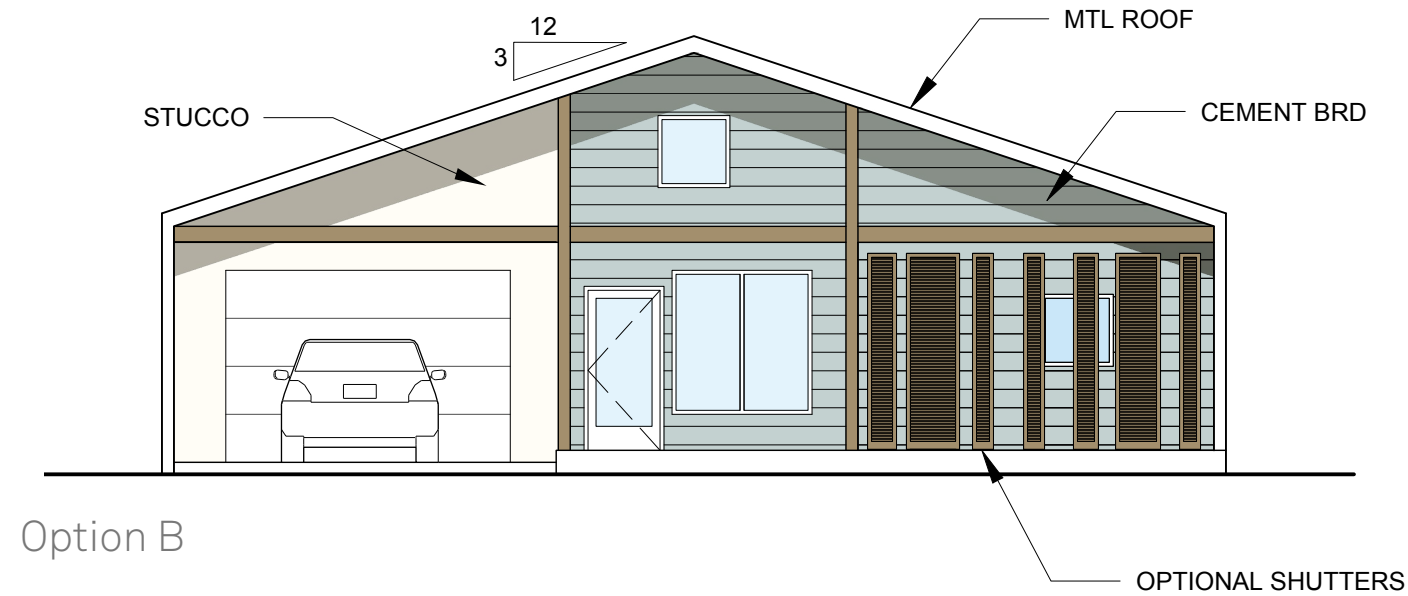


Aluminum or Vinyl Impact-Resistant Windows and Doors

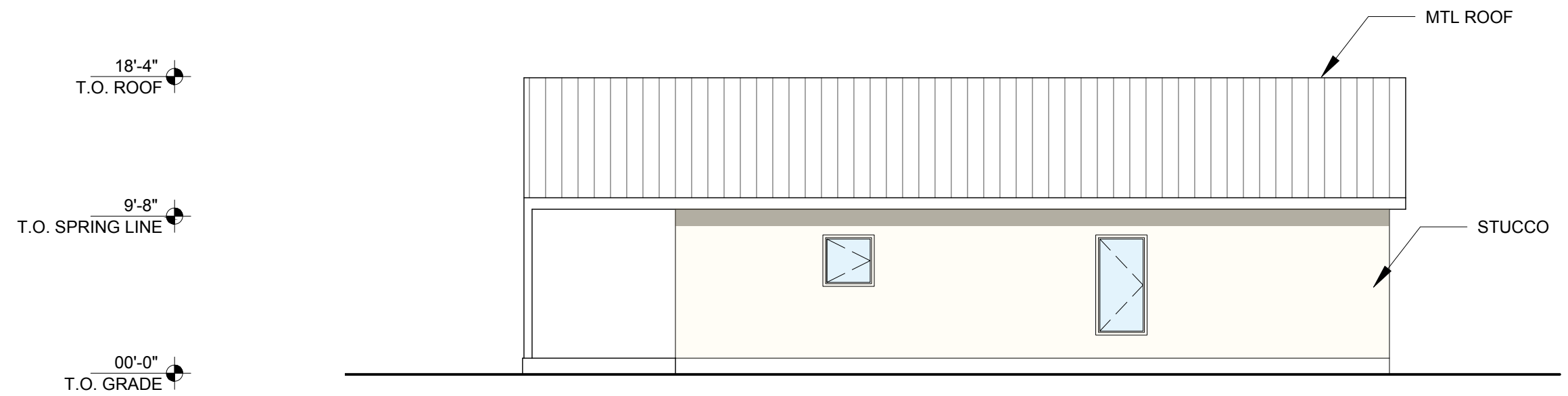
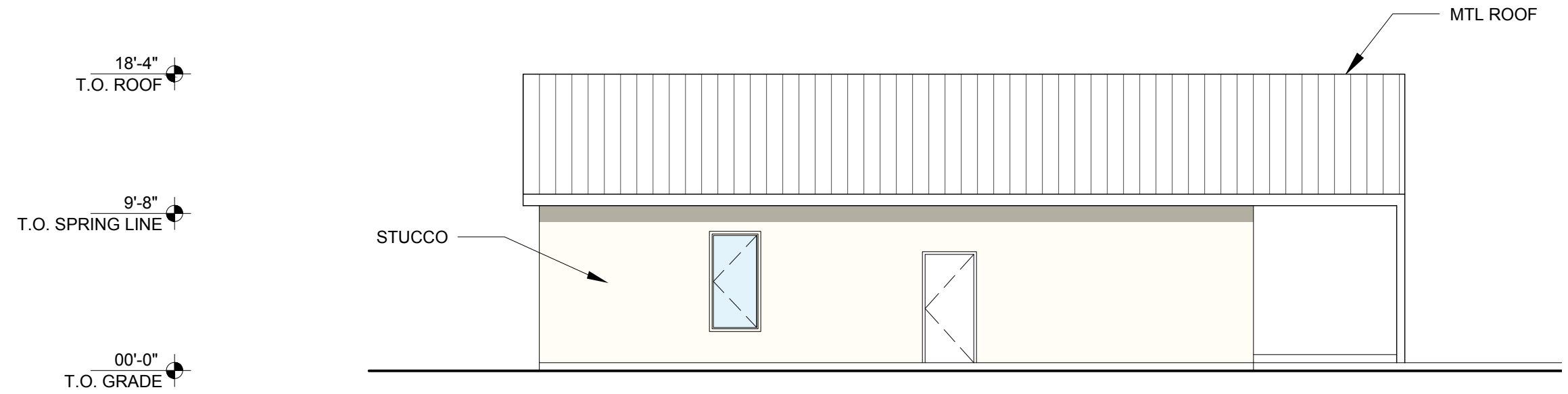
18'-4"
T.O. ROOF

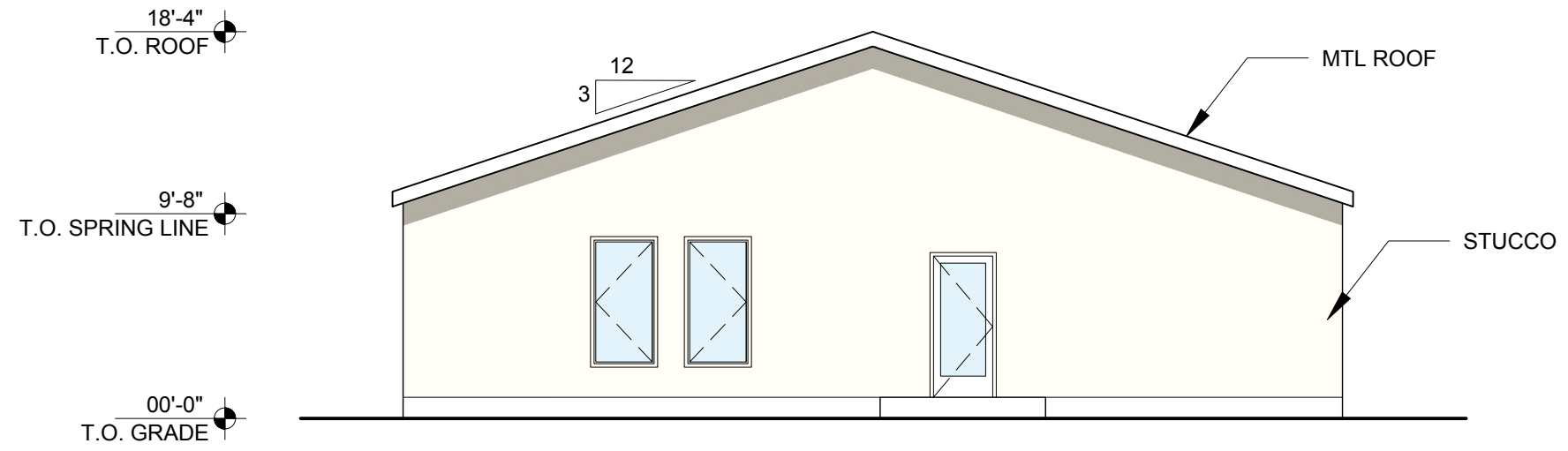
9'-8"
T.O. SPRING LINE

00'-0"
T.O. GRADE



Tamarind (Model C) Front Elevations





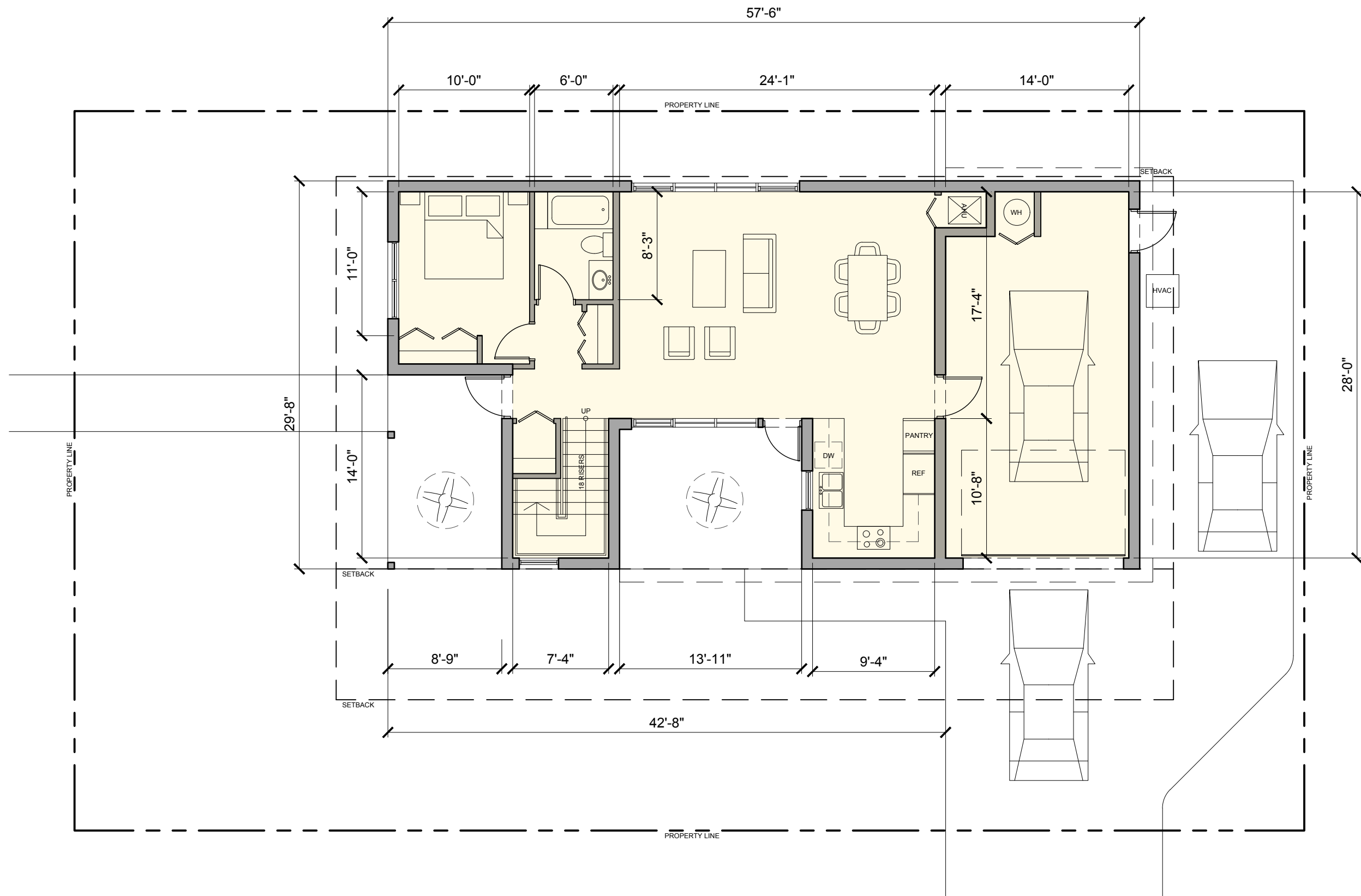
Tamarind (Model C)
Rear Elevation

THE PAPAYA

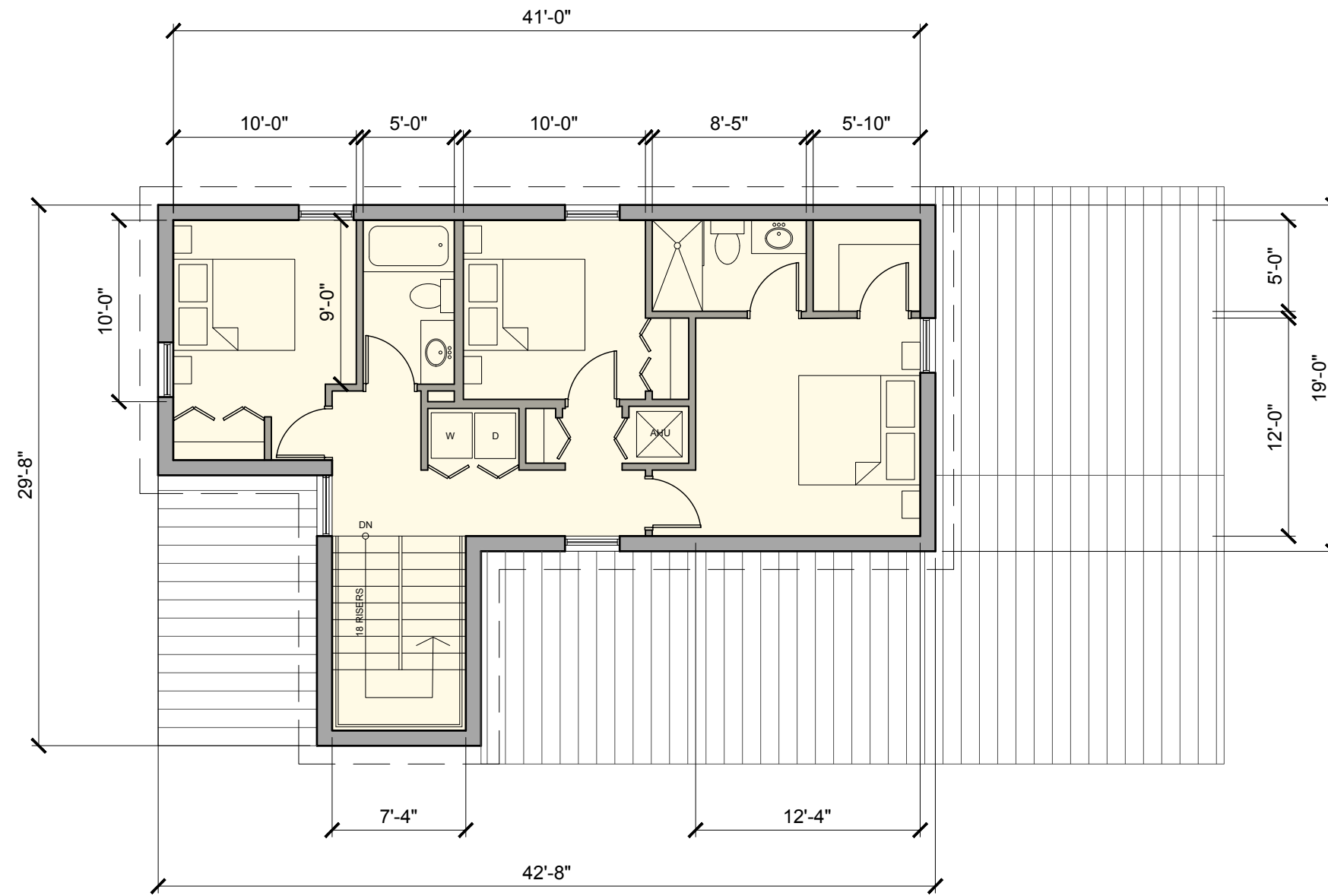
2-Story
4-Bedroom
3-Bathroom

1940 sf





Papaya (Model A)
Level 1 Plan

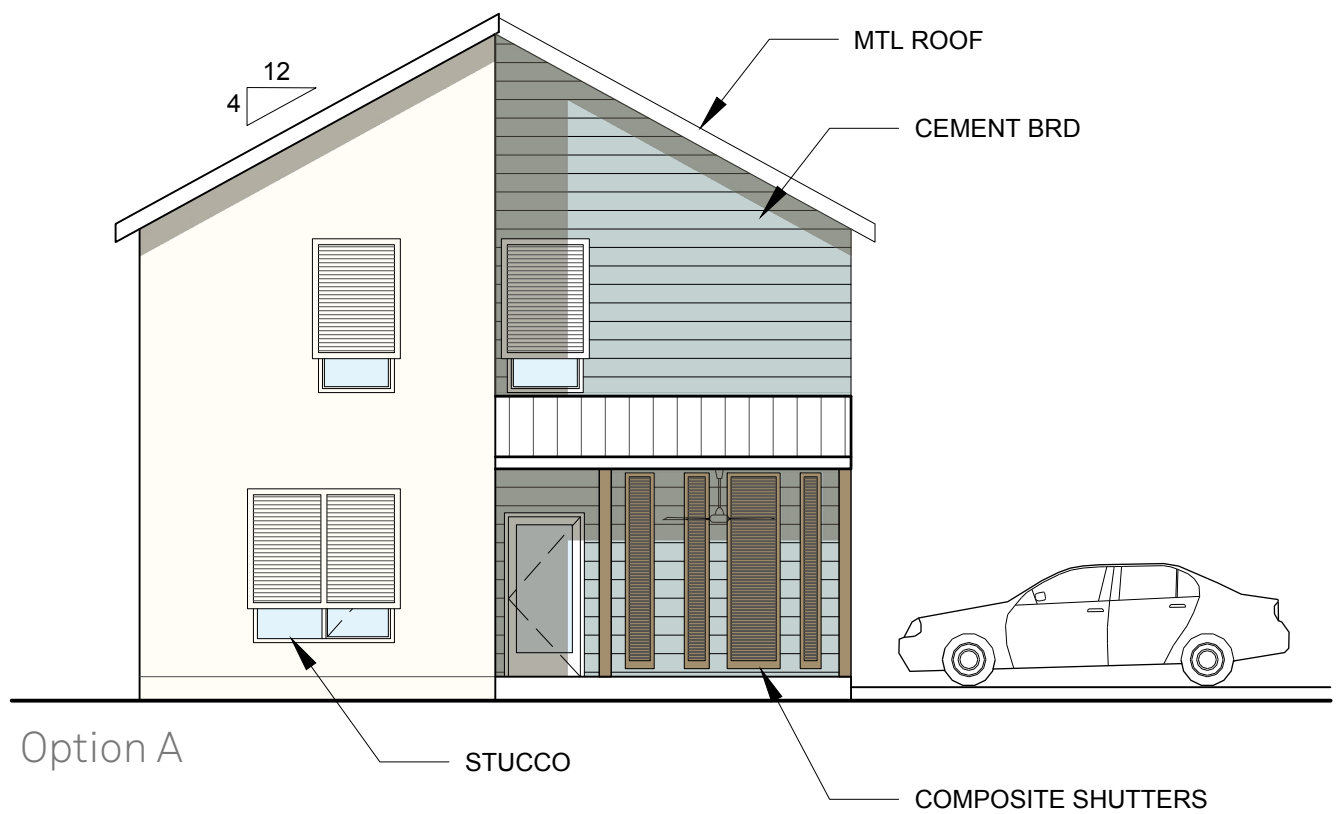


29'-0"
T.O. ROOF

19'-8"
T.O. SPRING LINE

9'-8"
T.O. SPRING LINE

00'-0"
T.O. GRADE



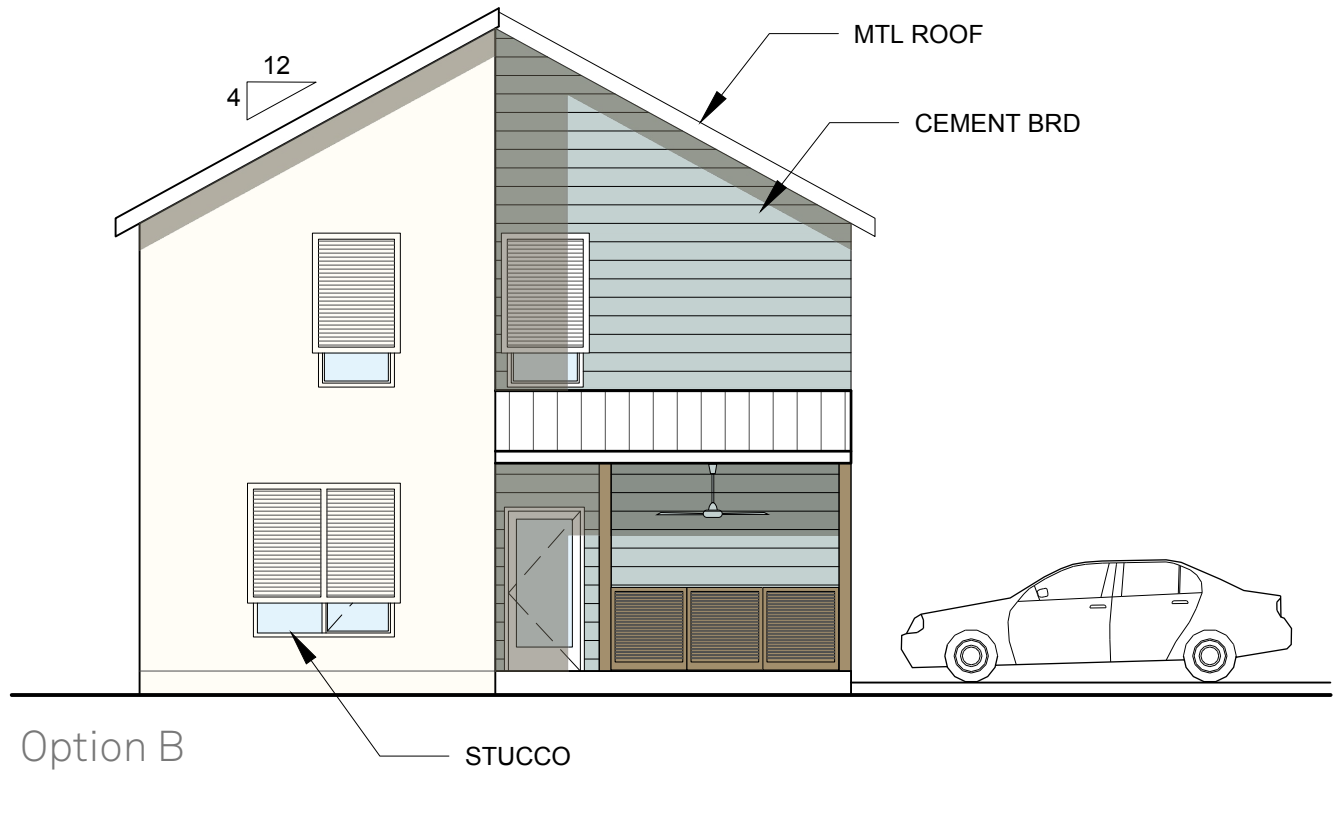
Option A

29'-0"
T.O. ROOF

19'-8"
T.O. SPRING LINE

9'-8"
T.O. SPRING LINE

00'-0"
T.O. GRADE



Option B



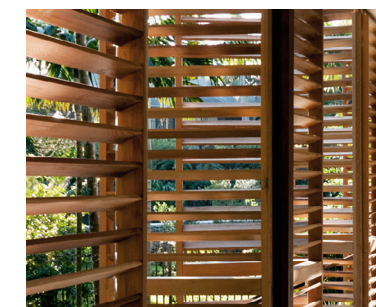
Metal Roof



Colored Cement Board Siding



Painted Stucco

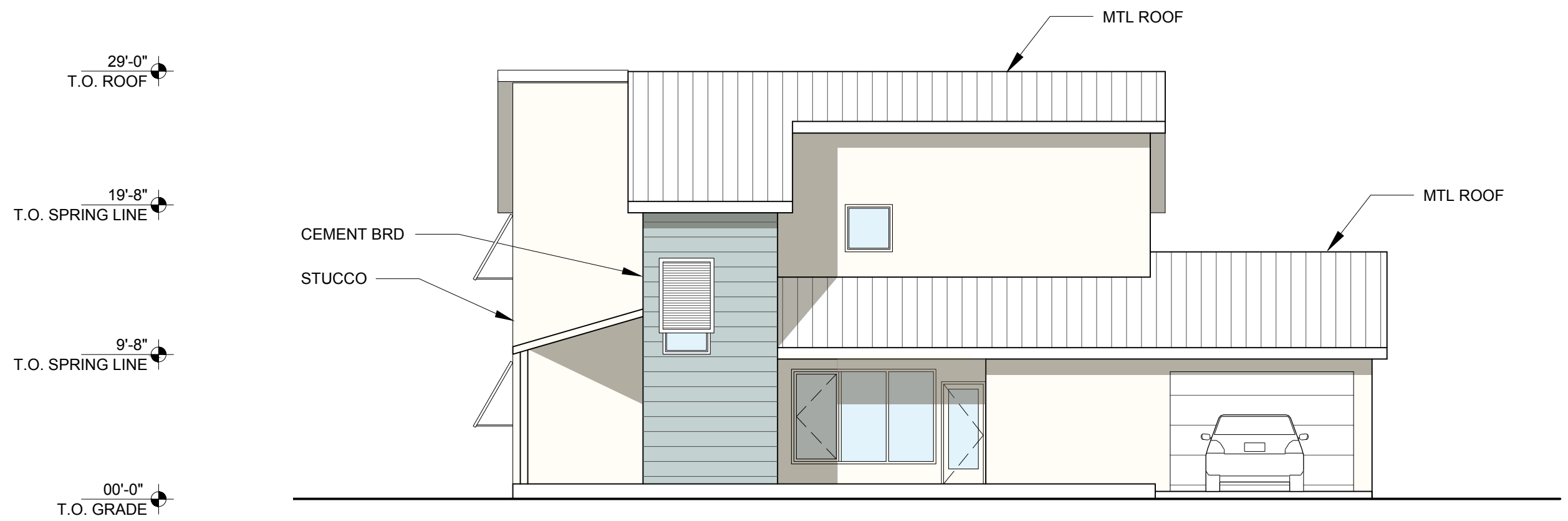
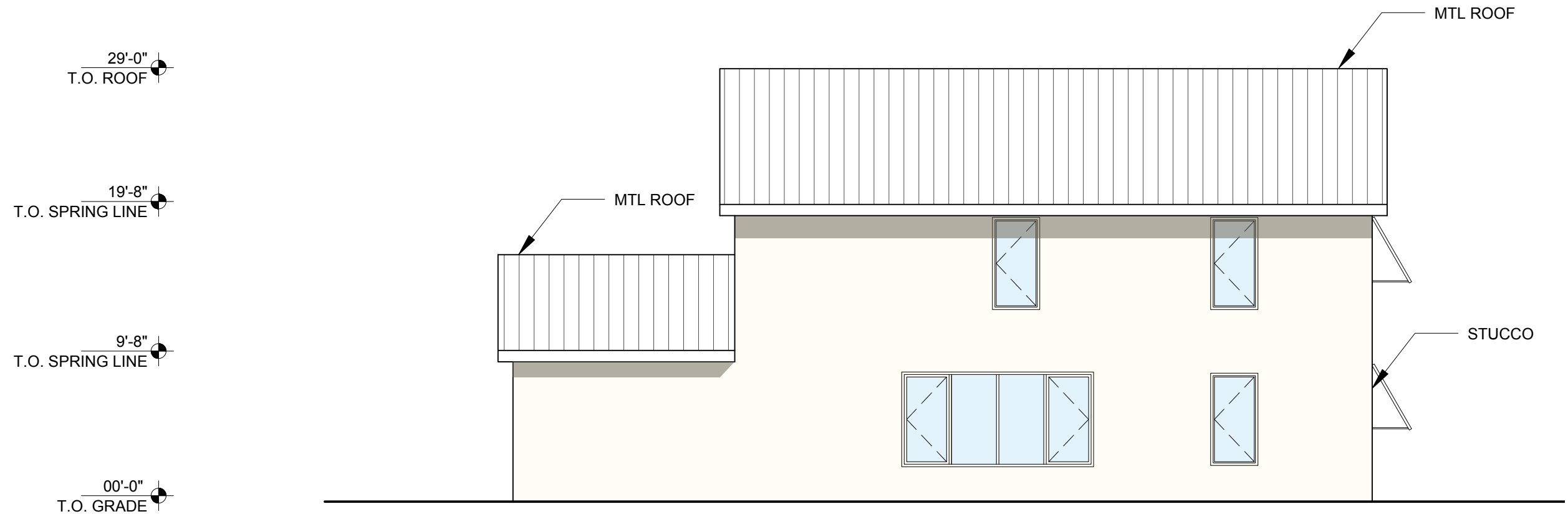


Composite Shutters or Railings

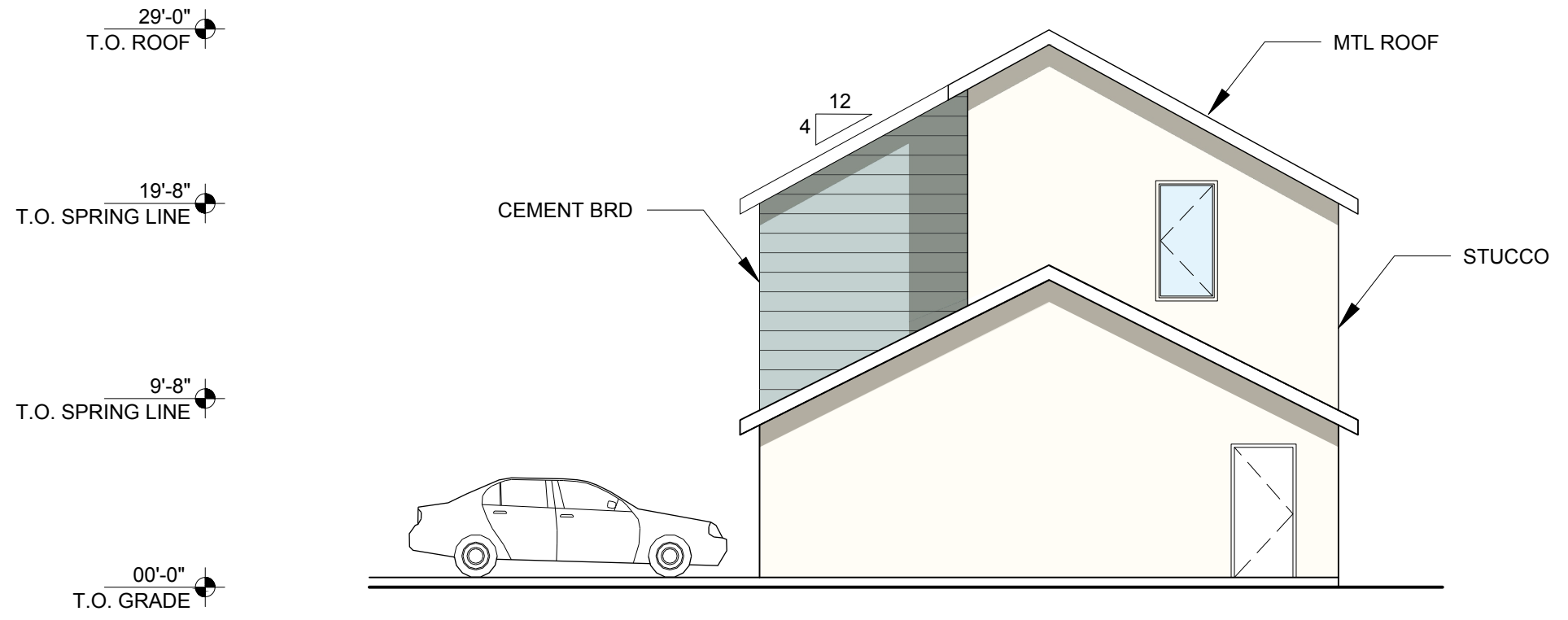


Aluminum or Vinyl Impact-Resistant Windows and Doors

Papaya (Model A) Front Elevations



Papaya (Model A)
Side Elevations

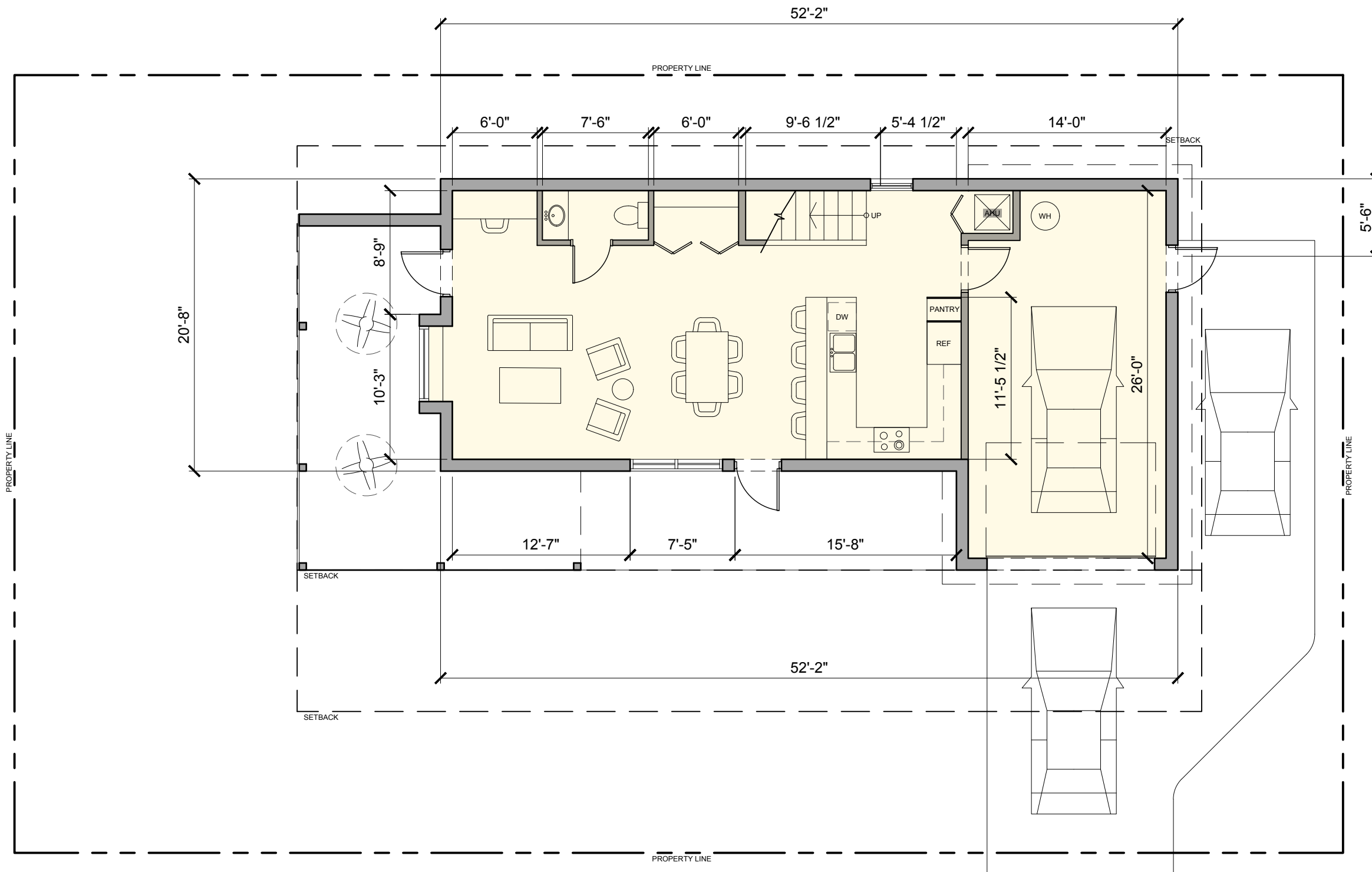


Papaya (Model A)
Rear Elevation

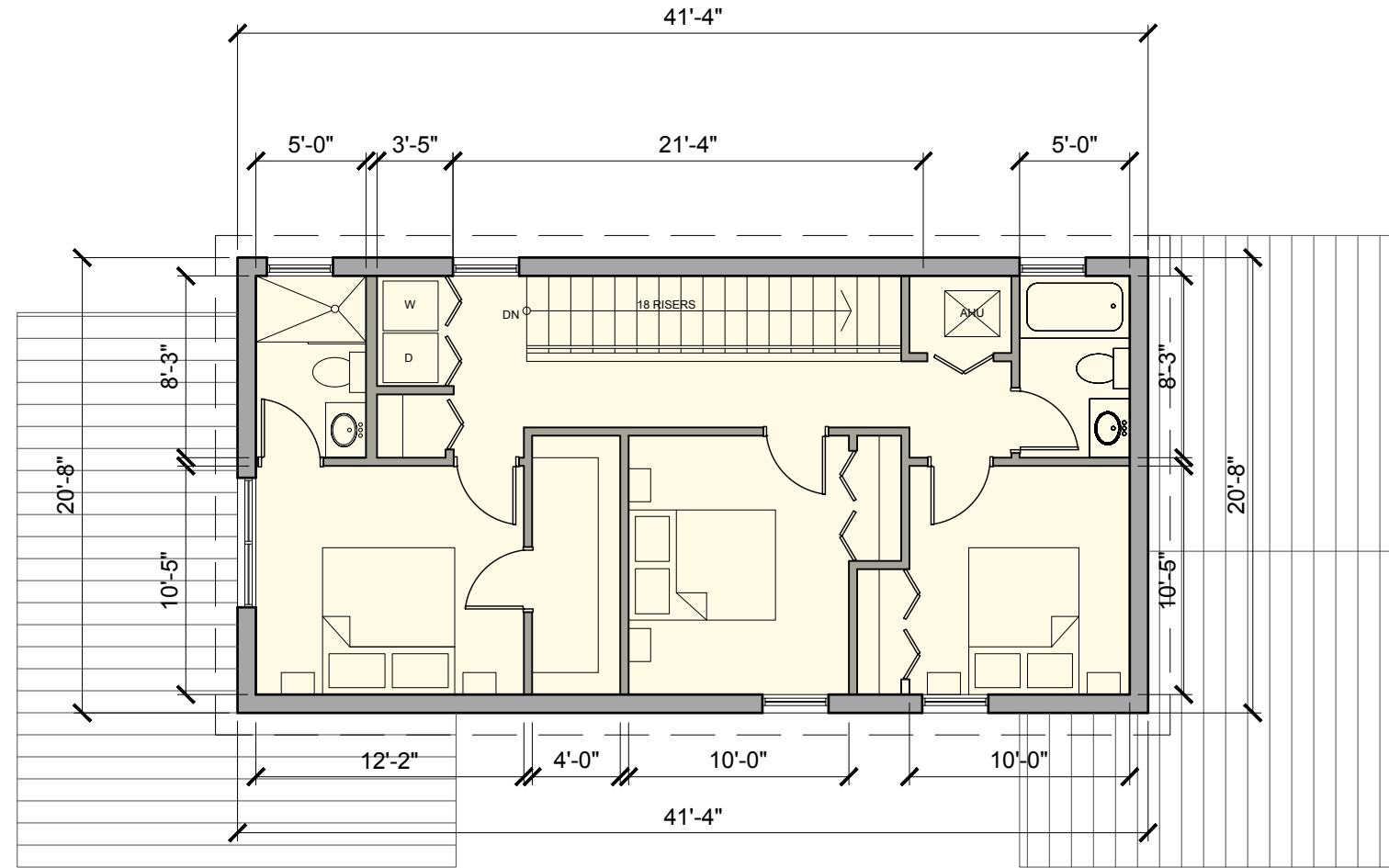
THE PINEAPPLE 1

2-Story
3-Bedroom
2.5-Bathroom

1580 sf



Pineapple 1 (Model B)
 Corner Lot
 Level 1 Plan



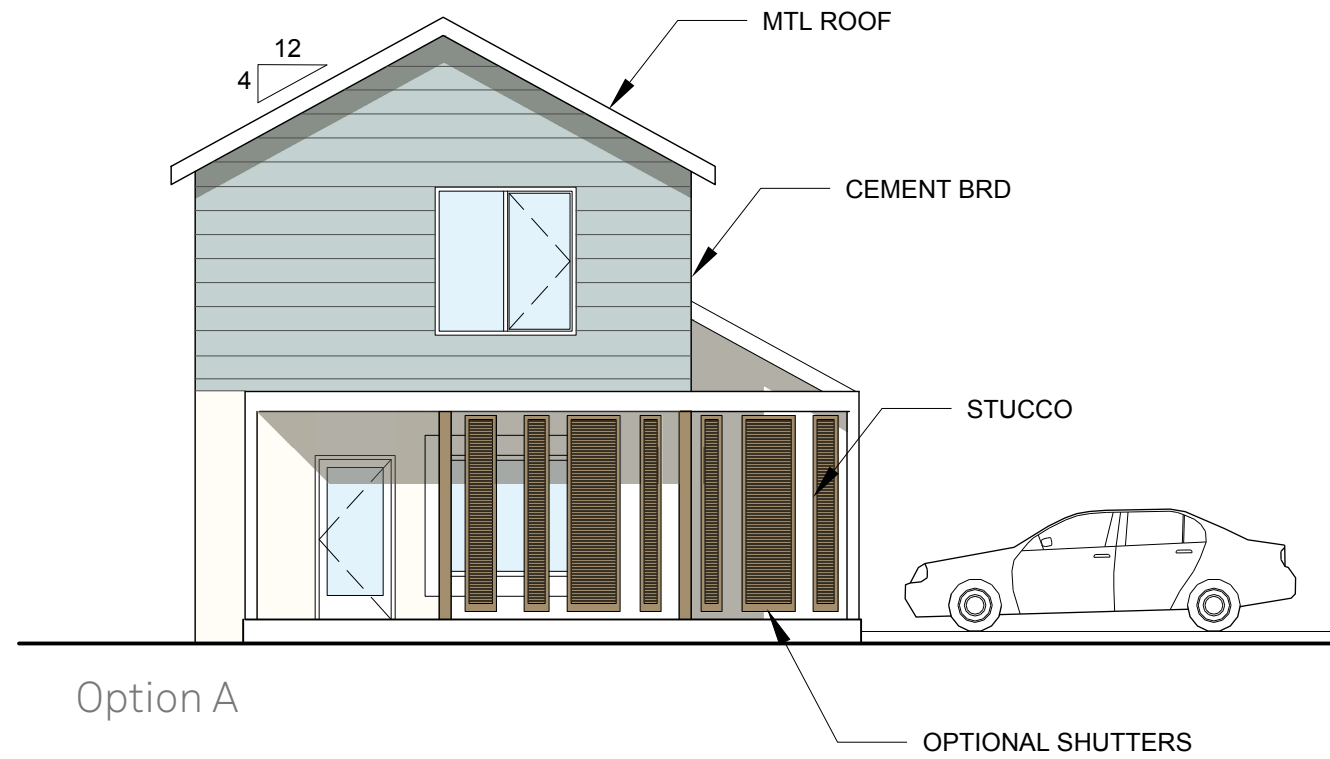
Pineapple 1 (Model B)
 Corner Lot
 Level 2 Plan

26'-2"
T.O. ROOF

19'-8"
T.O. SPRING LINE

9'-8"
T.O. SPRING LINE

00'-0"
T.O. GRADE



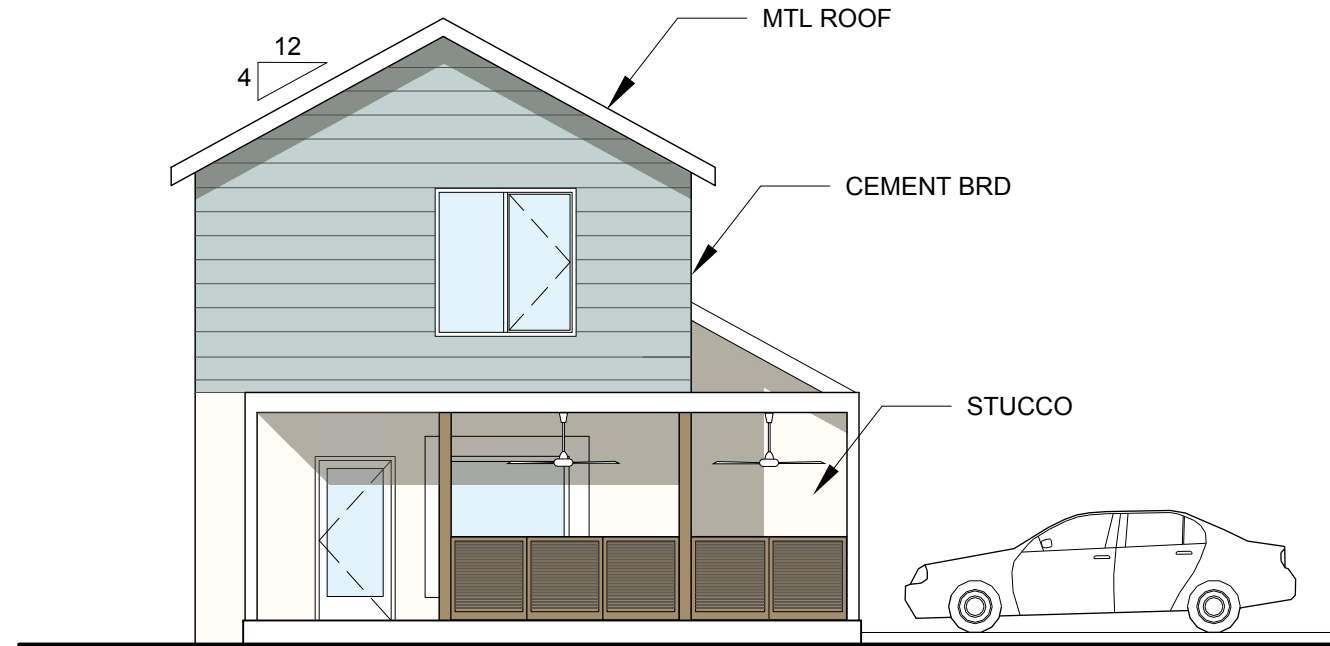
Option A

26'-2"
T.O. ROOF

19'-8"
T.O. SPRING LINE

9'-8"
T.O. SPRING LINE

00'-0"
T.O. GRADE



Option B



Metal Roof



Colored Cement Board Siding



Painted Stucco

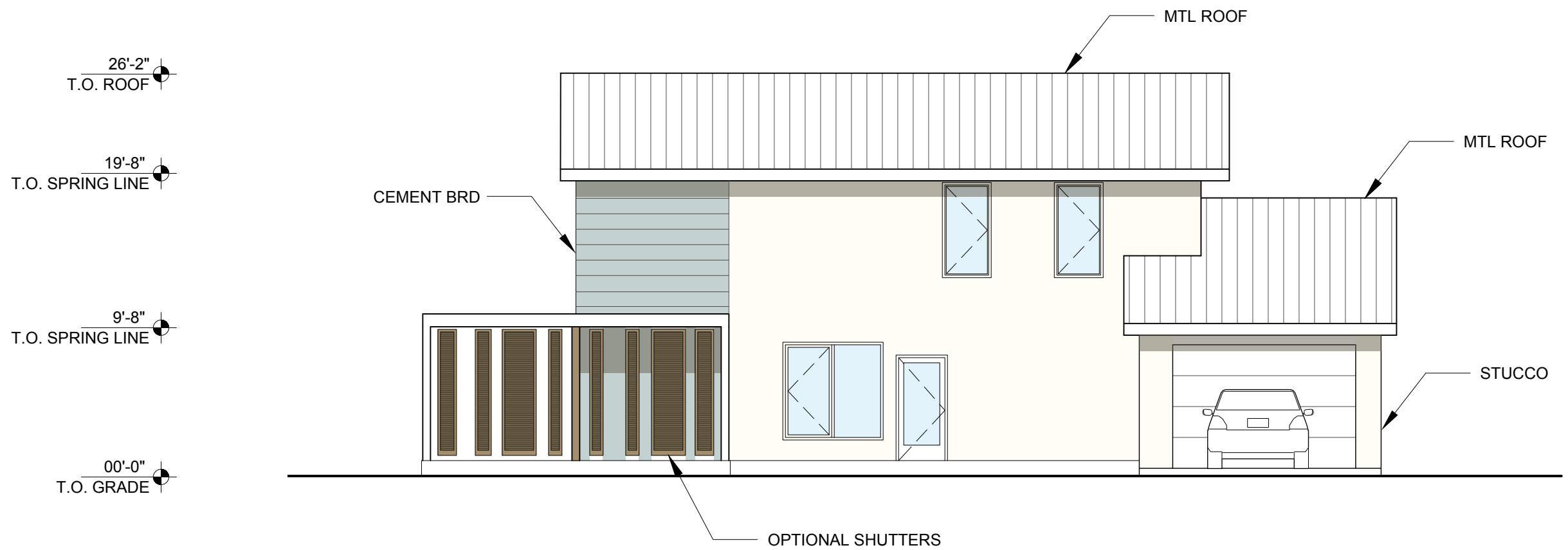
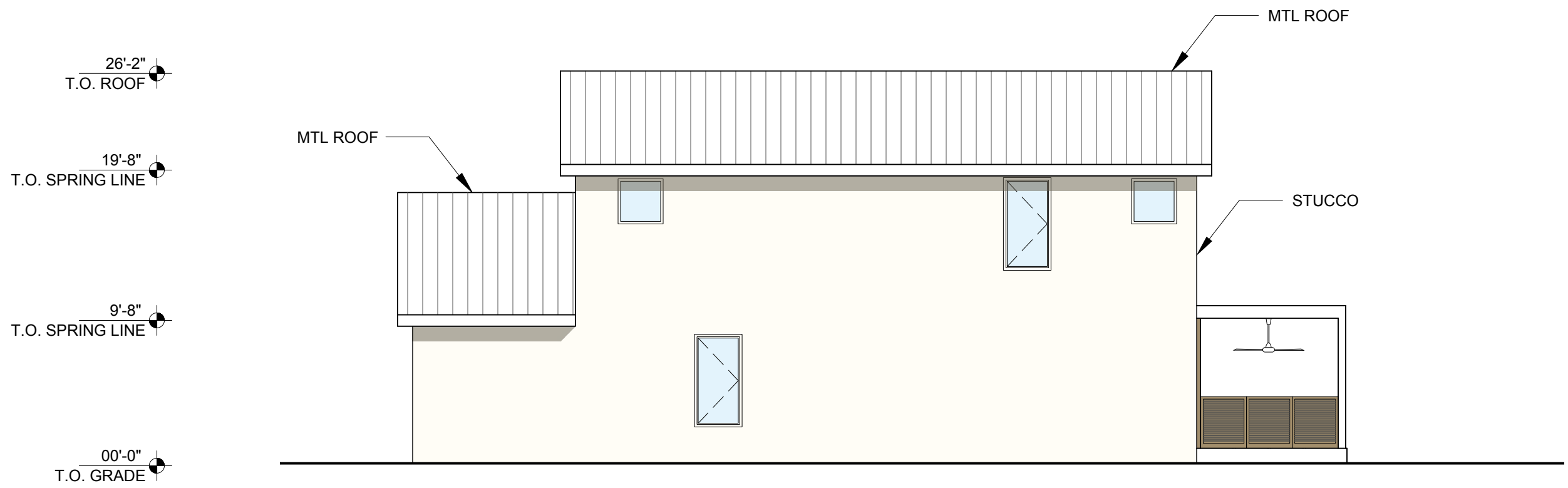


Composite Shutters or Railings



Aluminum or Vinyl Impact-Resistant Windows and Doors

Pineapple 1 (Model B)
Corner Lot
Front Elevations



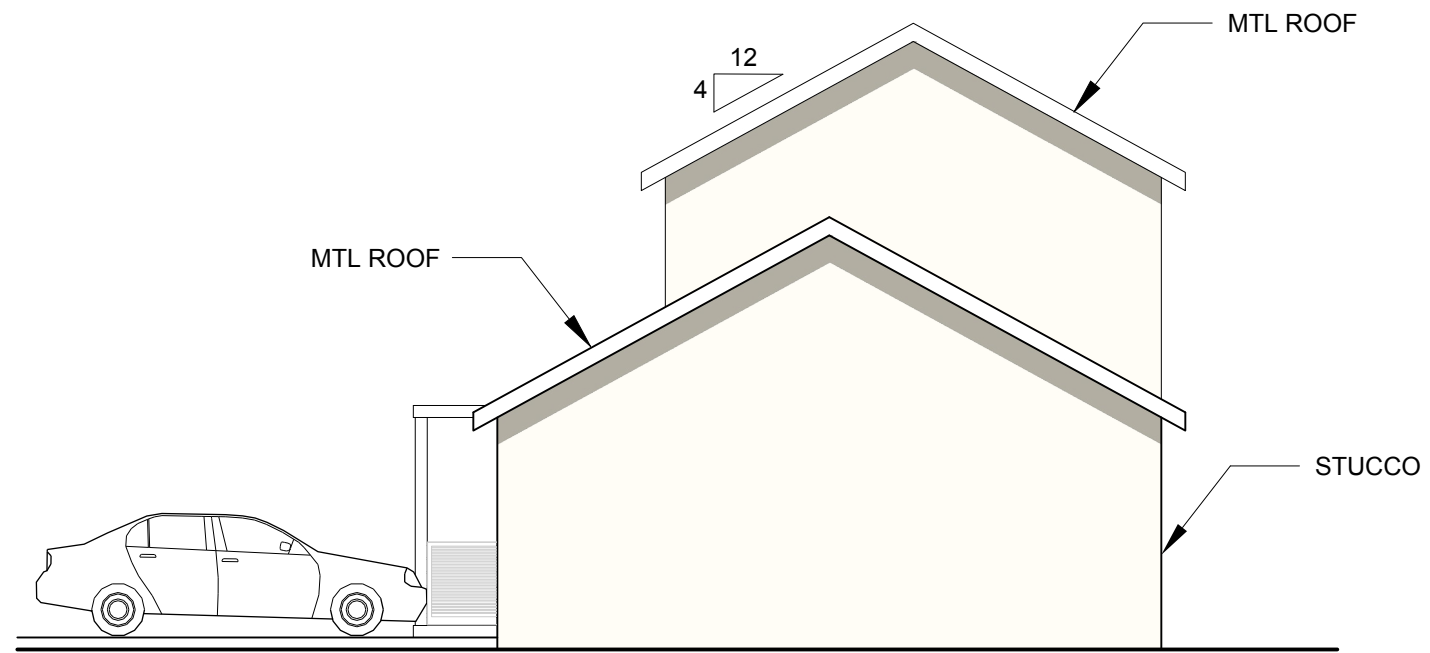
Pineapple 1 (Model B)
 Corner Lot
 Side Elevations

26'-2"
T.O. ROOF

19'-8"
T.O. SPRING LINE

9'-8"
T.O. SPRING LINE

00'-0"
T.O. GRADE



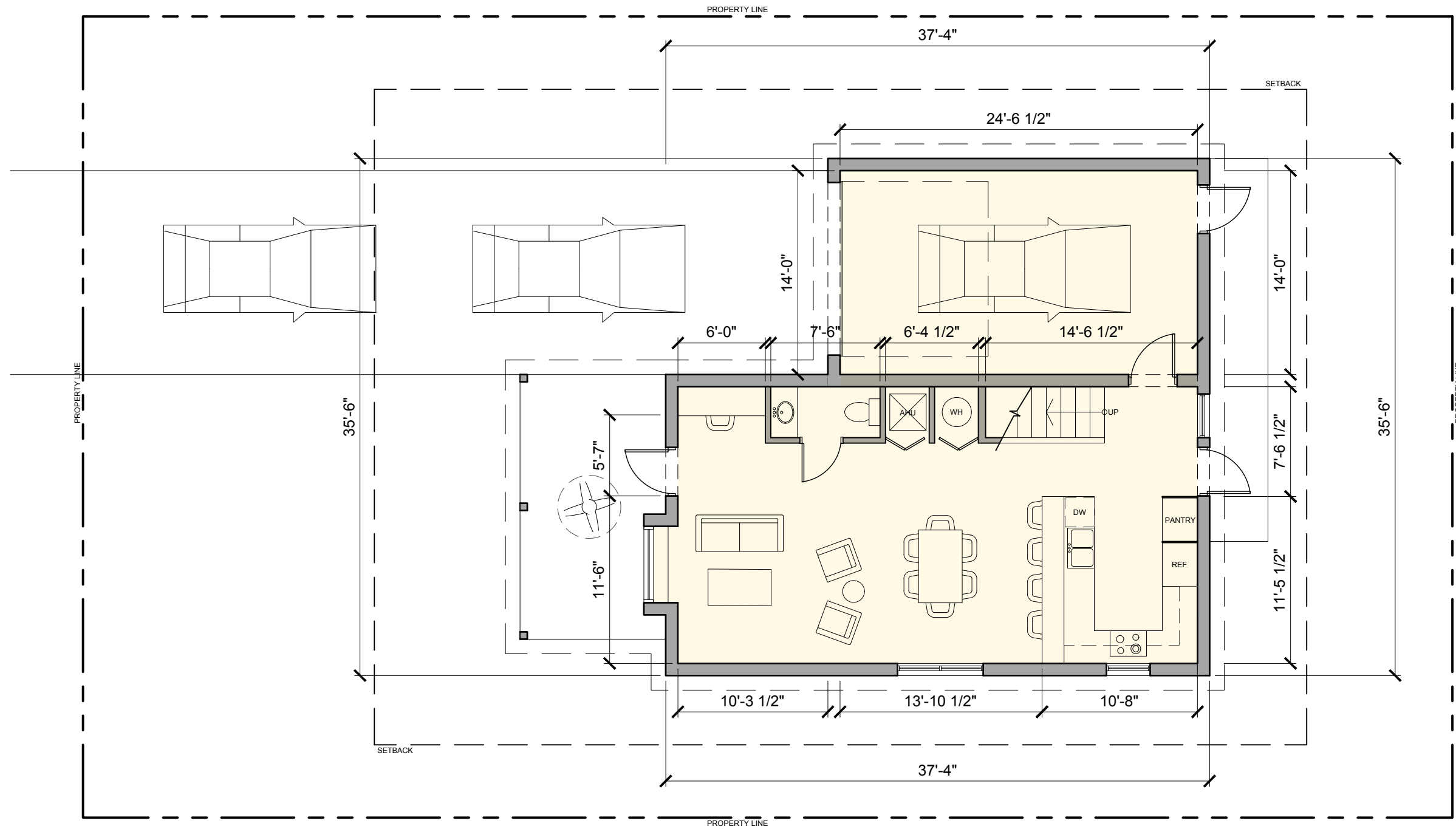
Pineapple 1 (Model B)
Corner Lot
Rear Elevations

THE PINEAPPLE 2

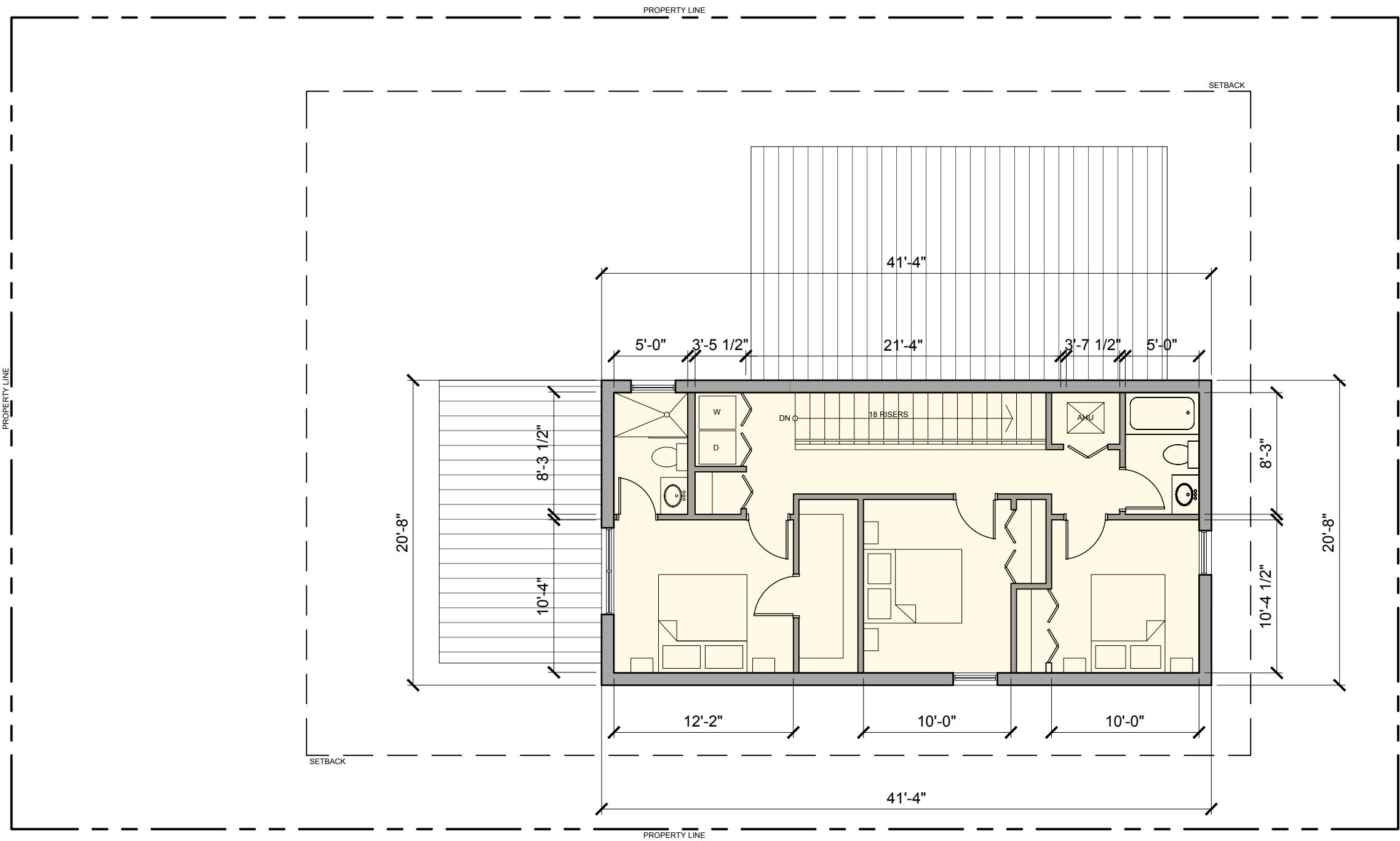
2-Story
3-Bedroom
2.5-Bathroom

1580 sf





Pineapple 2 (Model B)
 Infill Lot
 Level 1 Plan



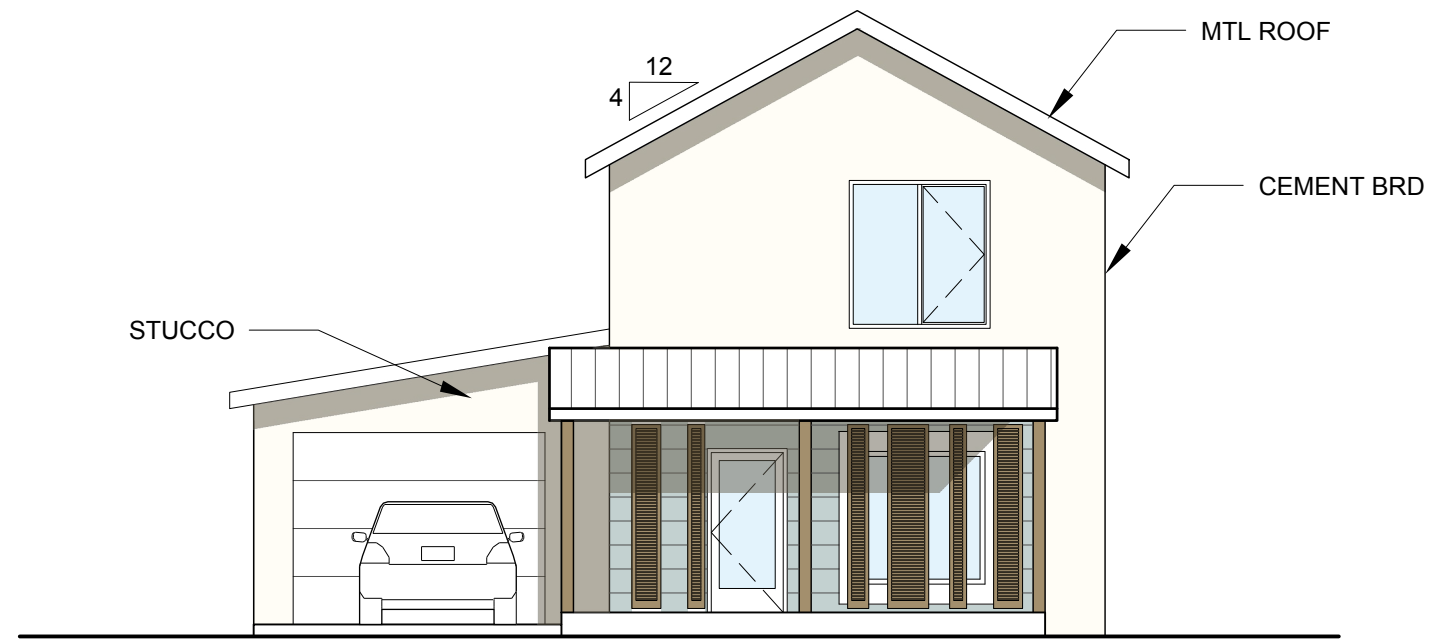
Pineapple 2 (Model B)
 Infill Lot
 Level 2 Plan

26'-2"
T.O. ROOF

19'-8"
T.O. SPRING LINE

9'-8"
T.O. SPRING LINE

00'-0"
T.O. GRADE



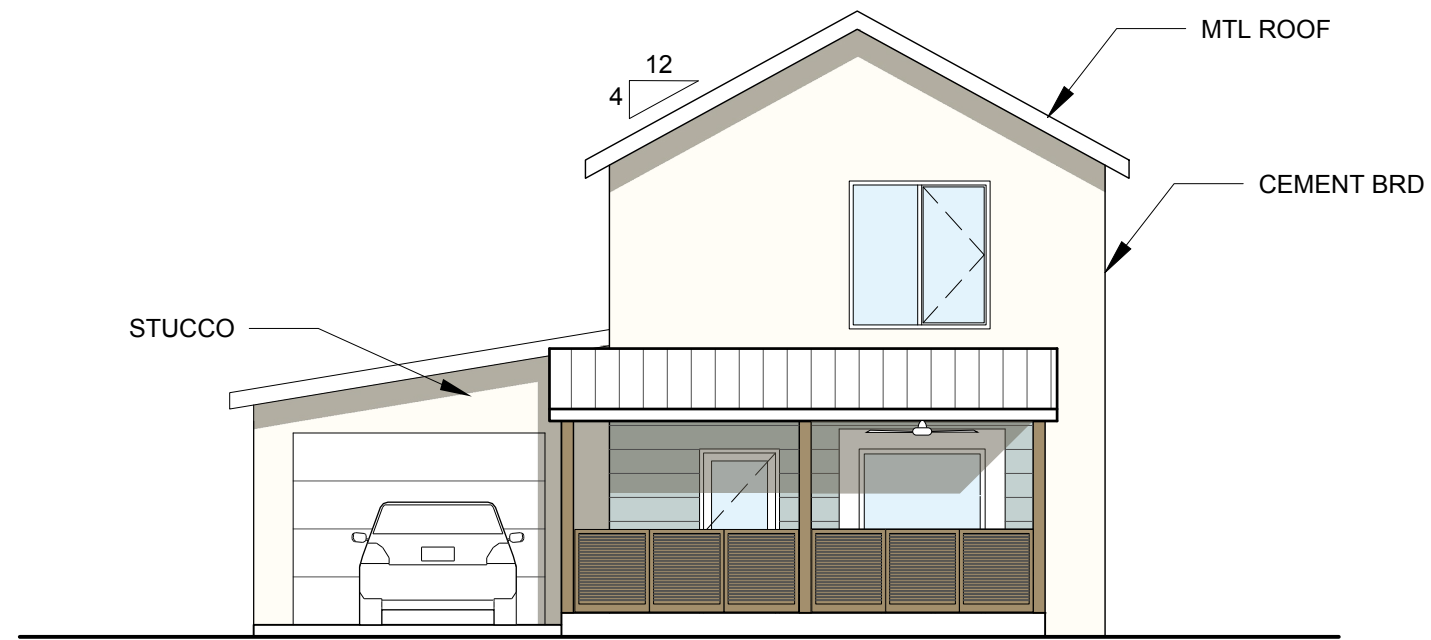
Option A

26'-2"
T.O. ROOF

19'-8"
T.O. SPRING LINE

9'-8"
T.O. SPRING LINE

00'-0"
T.O. GRADE



Option B



Metal Roof



Colored Cement Board Siding



Painted Stucco

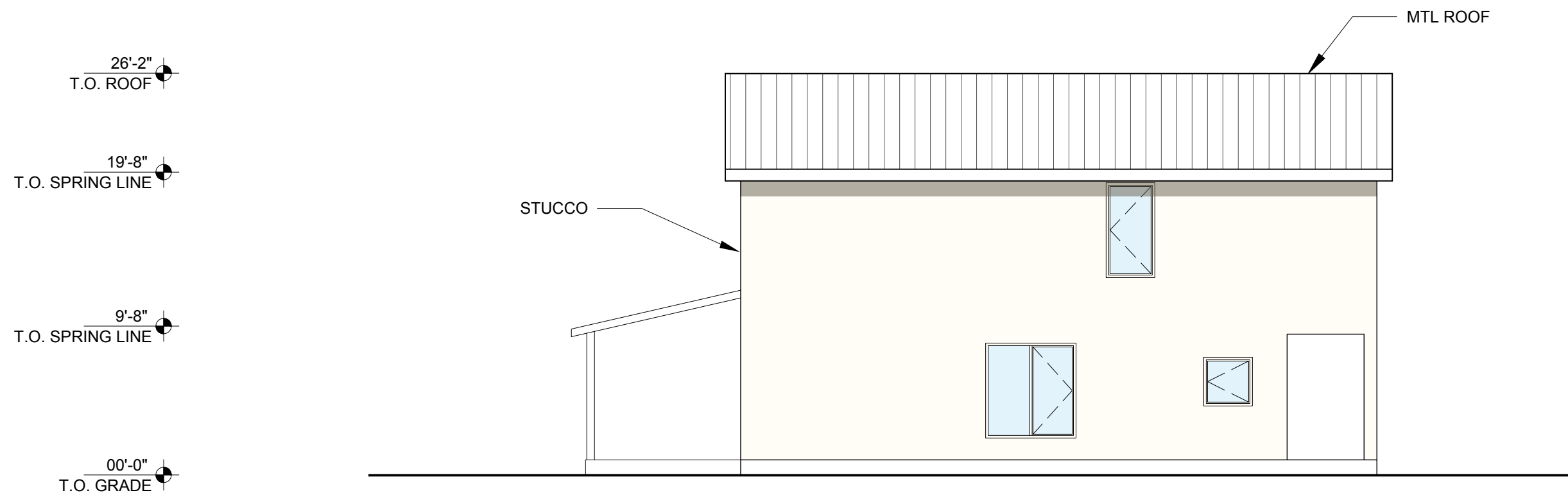
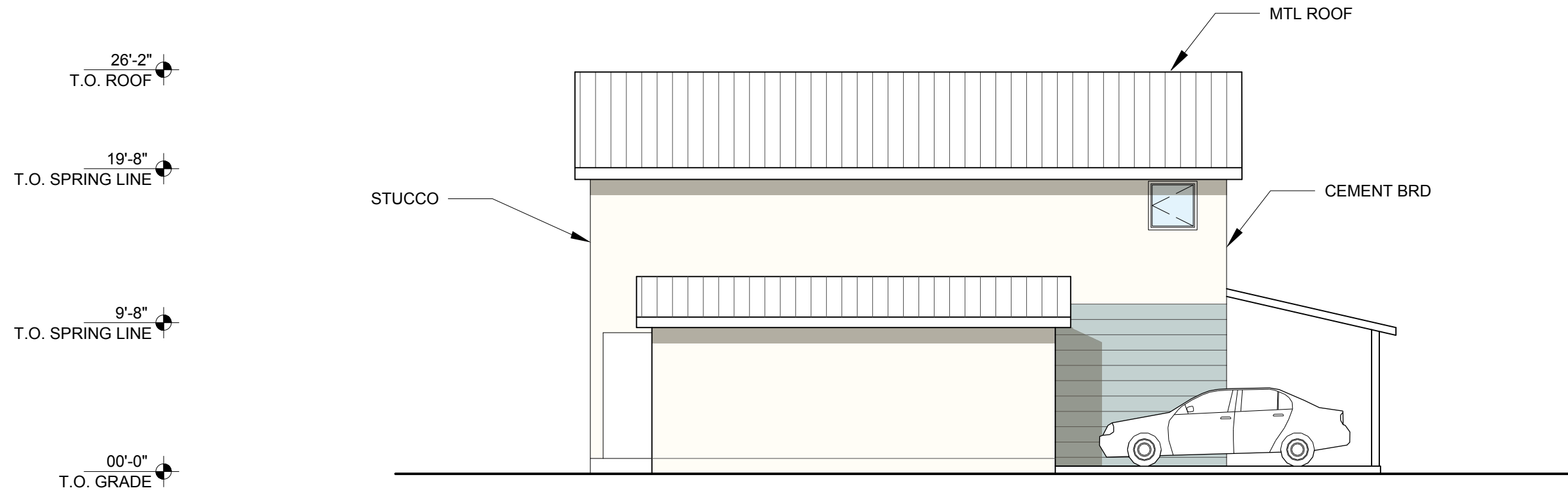


Composite Shutters or Railings



Aluminum or Vinyl Impact-Resistant Windows and Doors

Pineapple 2 (Model B)
Infill Lot
Front Elevations



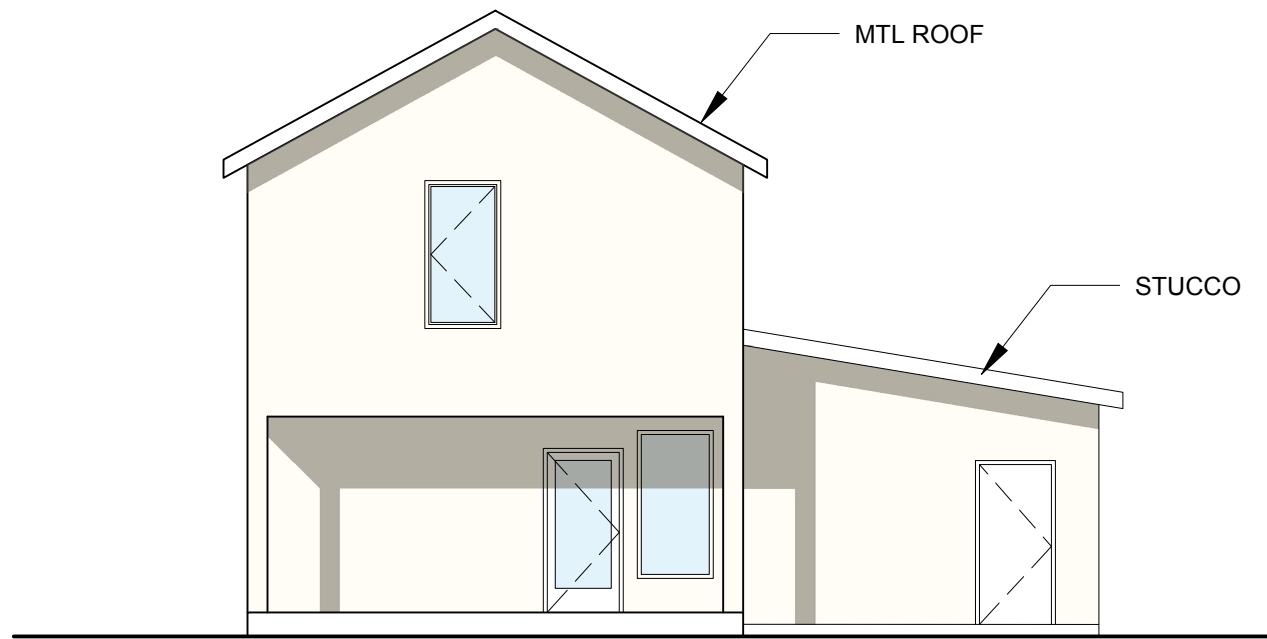
Pineapple 2 (Model B)
Infill Lot
Side Elevations

26'-2"
T.O. ROOF

19'-8"
T.O. SPRING LINE

9'-8"
T.O. SPRING LINE

00'-0"
T.O. GRADE



Pineapple 2 (Model B)
Infill Lot
Rear Elevation



THANK YOU